



svealyft

Tel.nr: 040-221290

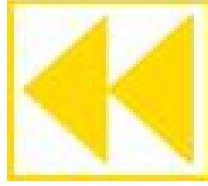
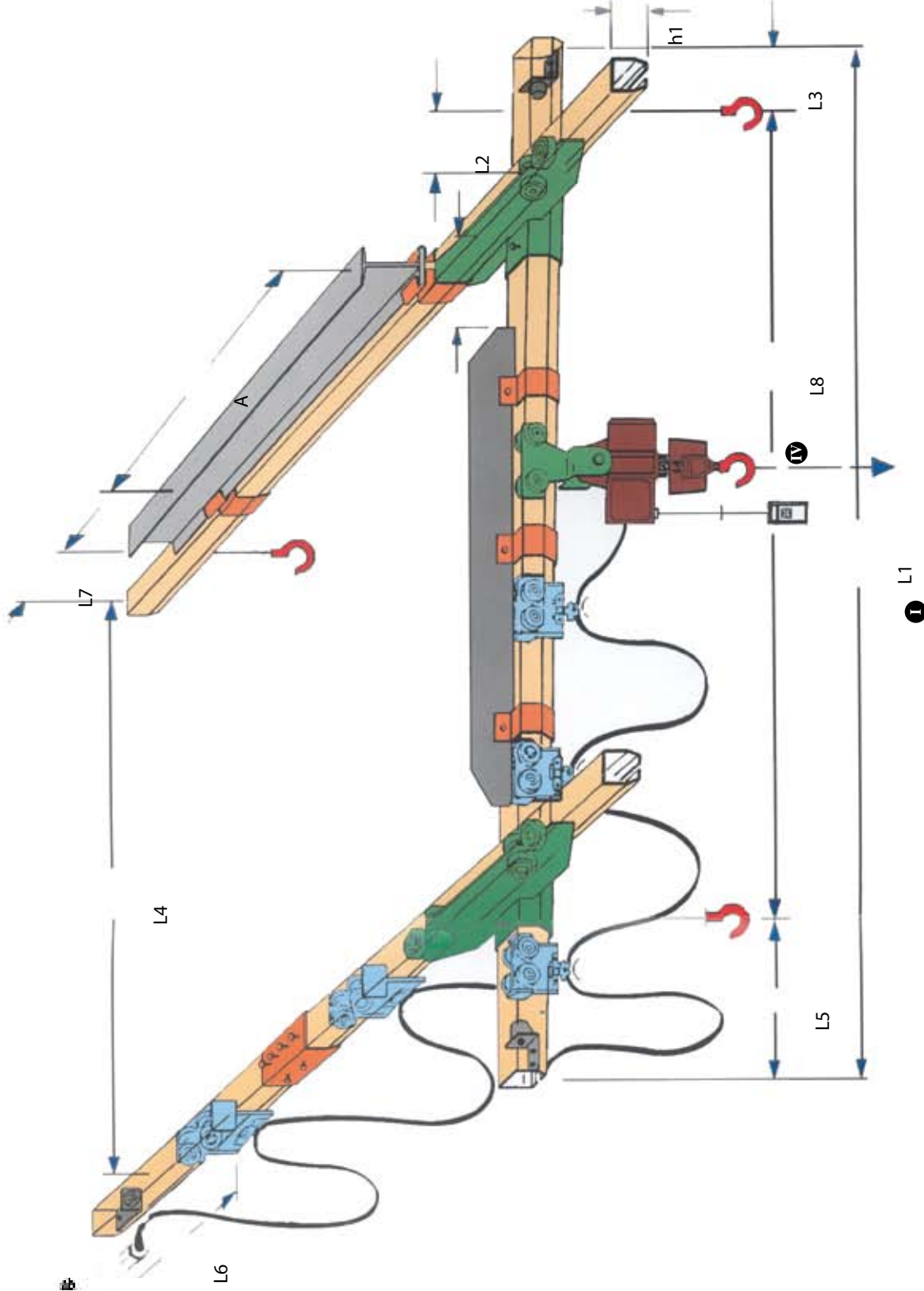
Fax nr: 040-221270

E-mail: info@svealyft.se

Web: www.svealyft.se

Box 9172

200 39 Malmö



svealyft

Load capacity P kg.	80	150	250	500	750	1000
NIKO Profile No.	23.000	24.000	25.000	26.000	27.000	27.000
L1	mm.	4.000	5.000	6.000	6.000	6.000
L2max	mm.	300	300	400	400	500
L3	mm.	100	110	160	200	450
L4max	mm.	3.500	4.500	5.500	5.500	5.500
L7	mm.	240	270	330	375	425
h1	mm.	35	43,5	60	75	110
Reinforcement	mm.	90X6	110X8	120X10	150X10	180X10
L8	mm.				180X10	180X10
					L8=L1 - (L3+L5)	

SPECIFICATION CHART

LOAD CAPACITY (kgr)

PAGE	ITEM	SPECIFICATION	80	150	250	500/750	1000	
6		TRACK PROFILE	23.000	24.000	25.000	26.000	27.000	
7		CROSS MEMBER PROFILE WITH REINFORCEMENT	23.040	24.040	25.040	26.040	27.040	
8		SPLICE JOINT	23.B49	24.B49	25.B49	26.B49	27.B49	
9		SUPPORT BRACKET BLACK WITHOUT MOUNTING FLANGE	23.B50	24.B50	25.B50	26.B50	27.B50	
		ZINC-PLATED	23.B00	24.B00	25.B00	26.B00	27.B00	
10		SPLIT SUPPORT BRACKET	23.B03	24.B03	25.B03	26.B03	27.B03	
11		SPLIT SUSPENSION BRACKET	23.B08/ 23.B14	24.B08/ 24.B20	25.B10/ 25.B26	26.B16/ 26.B26	27.B20/ 27.B26	
12		ADJUSTABLE BRACKET	23.B38		25.B38		-	
		SUSPENSION BRACKET TURNBUCKLE	23.B39		25.B39		-	
13		JOIST CLAMP	23.B37	24.B37	25.B37	26.B37	-	
14		CEILING SUPPORT BRACKET	23.B02	24.B02	25.B02	26.B02	27.B02	
15		ADJUSTABLE BRACKET	23.B04	24.B04	25.B04	26.B04	27.B04	
16		TRACK LOCATION TROLLEY	23.T54	24.T54	25.T54	26.T54	27.T54	
17								
18		4-WHEEL TROLLEY WITH A ROTATING EYE NUT DIN 582	For 80 kgr 23.T40	For 150 kgr 24.T40	For 250 kgr 25.T40	For 500 kgr 26.T40	For 800 kgr 27.T40	
19		4-WHEEL TROLLEY WITH A ROTATING EYE NUT DIN 582	For 40 kgr 23.T20	For 80 kgr 24.T20	For 200 kgr 25.T20	For 400 kgr 26.T20	For 800 kgr 27.T20	
20		FOUR WHEEL TROLLEY WITH PIN	BOLTED	-	24.T44	25.T44	26.T44	-
21			WELDED	-	24.T46 for 80kg	25.T46 for 200kg	26.T46 for 500kg	-
22		4-WHEEL TROLLEY WITH HOLE	For 40 kgr 23.T10	For 80 kgr 24.T10	For 200kgr 25.T10	For 400 kgr 26.T10	For 800 kgr 27.T10	
23		LOAD CARRIER WITH EYE NUT DIN 582 USING TWO 4-WHEEL TROLLEYS	For 80 kgr 23.T24	For 150 kgr 24.T24	For 250 kgr 25.T24	For 750 kgr 26.T24	For 1000 kgr 27.T24	
24		TRACK END STOP	23.X01	24.X01	25.X01	26.X01	27.X01	
25		END STOP WITH CABLE END CLAMP	23.K02	24.K02	25.K02	26.K02	27.K02	
26		NYLON CABLE TROLLEYS	23.L00	25.L00		27.L00		
27		METAL CABLE TROLLEYS	FOR ROUND AND FLAT CABLES					
28		PLATFORM CABLE AND CLANDS TRACK TRANSFER ASSEMBLY	TO SUIT APPLICATION					
			23.H00	24.H00	25.H00	26.H00	27.H00	

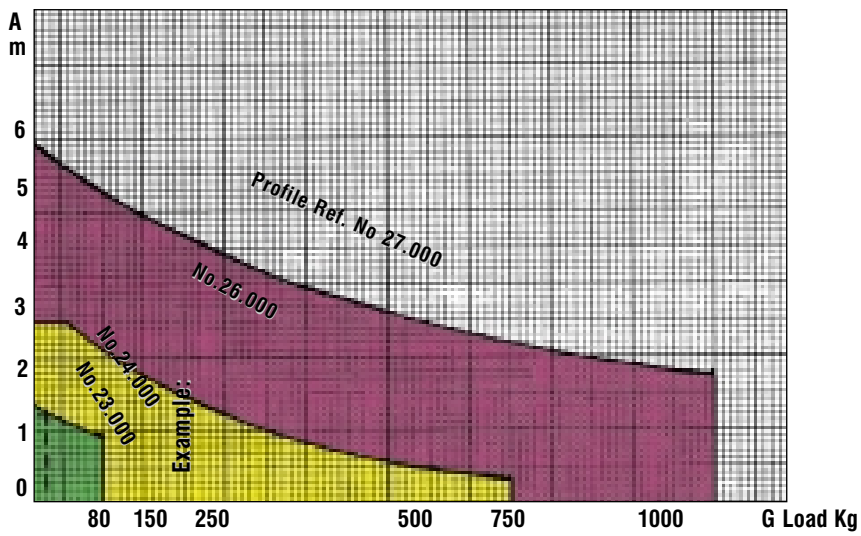


CALCULATION OF SUPPORT DISTANCE "A"



The graph below shows the maximum allowable distance "A" for a given load "P" for all five track sections.

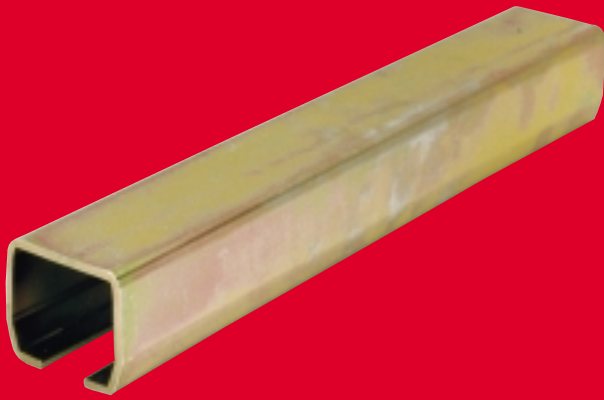
If the "A" dimension falls outside the graph limits it is possible to increase the span "A" by fitting a "Reinforcement Spine" See diagram on page 7




Example:
P=180 Kg
Profile 25.000
A=2,20m



TRACK PROFILE



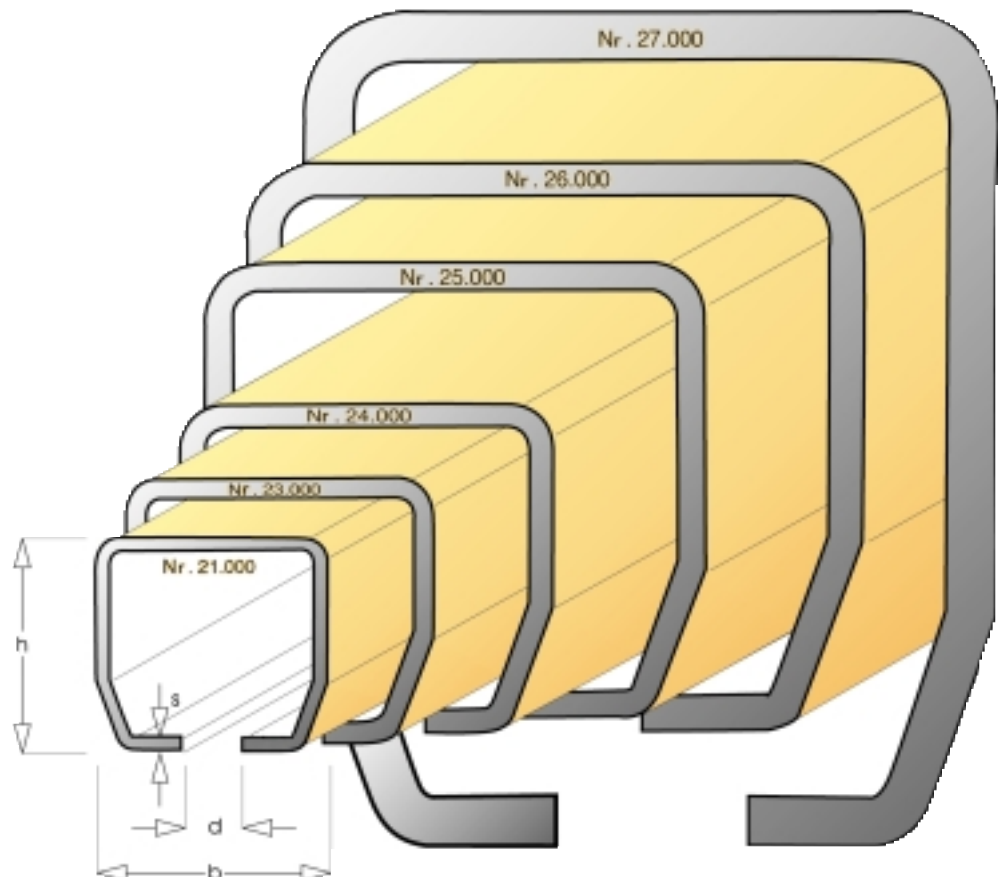
 Our range of track sections are of compact design, and of high quality. They are of cold rolled steel manufacture and are supplied in standard 6 metre lengths in either plain or zinc plated.

Due to the design of the tapered sides this reduces the possibility of a build up of dust thus assuring smooth running characteristics of the trolleys.



NIKO Profile No.	h	b	d	s	h1	Wx cm3	Weight kg/m
21.000	28,0	30,0	8,0	1,75	15,73	1,06	1,27
23.000	35,0	40,0	11,0	2,75	19,98	2,45	2,47
24.000	43,5	48,5	15,0	3,20	25,05	4,33	3,58
25.000	60,0	65,0	18,0	3,60	33,98	10,85	6,18
26.000	75,0	80,0	22,0	4,50	42,45	20,17	9,16
27.000	110,0	90,0	25,0	6,50	60,72	50,75	16,45

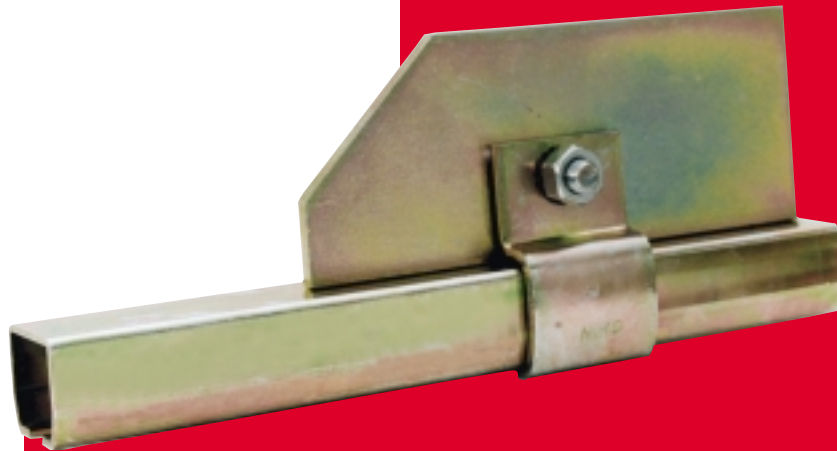
SCALE 1:1



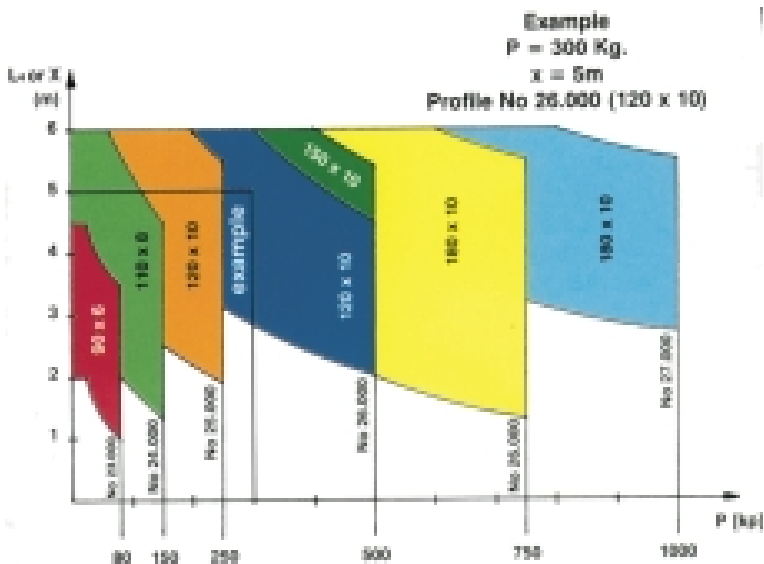


The cross member is reinforced by the addition of a rectangular section spine located in position via split type support brackets thus facilitating easy installation. On completion of installation we recommend that the spine be stitch welded in position to prevent detachment in the interest of safety. The reinforced track can be also used at the parallel tracks of the crane when we cannot install supports in short distances. For the selection of the reinforcing plate in these conditions look the diagram example.

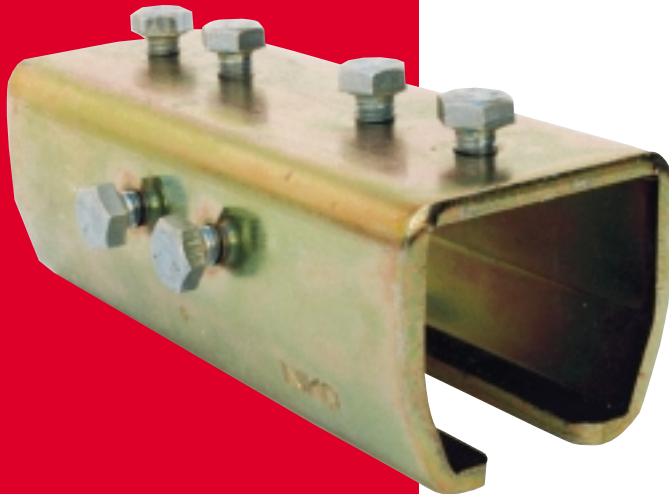
REINFORCED TRACK



NIKO Profile No.	23.000	24.000	25.000	26.000	27.000
Reinforced track No.	23.040	24.040	25.040	26.040	27.040

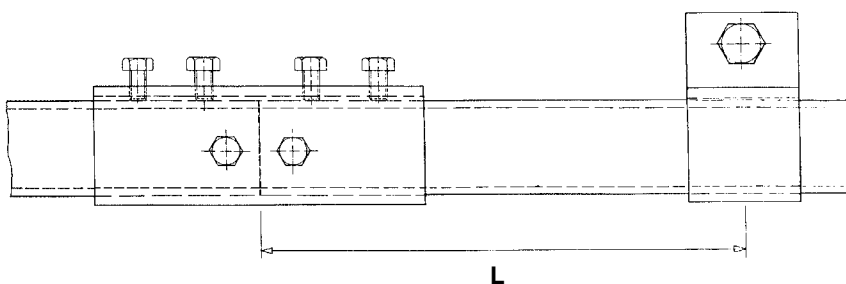
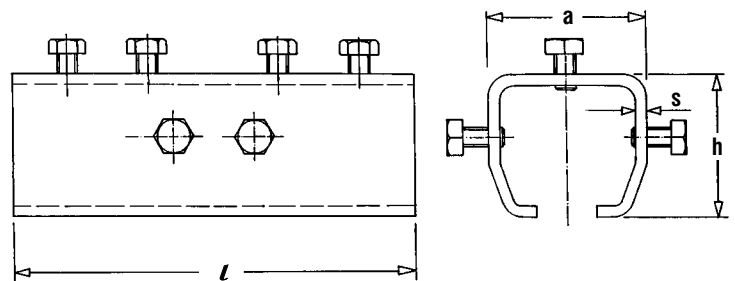


TRACK JOINTS



The track sections are joined using the track joint by tightening the top screws first then aligning the profiles by means of the side screws.

NIKO Profile No.	23.000	24.000	25.000	26.000	27.000
Splice joint No.	23.B49	24.B49	25.B49	26.B49	27.B49
Dimension l mm.	120	150	180	200	250
Dimension a mm.	49	60	80	100	114
Dimension h mm.	45	54	75	97	134
Dimension s mm.	4	5	6	8	10



$$L = 0.1 \bullet A \text{ max}$$

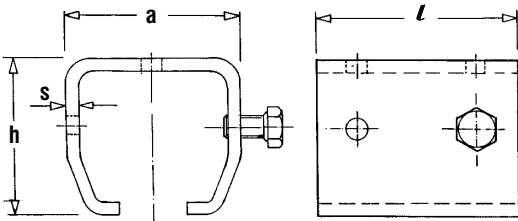
For A max, see diagram in page 4



WELD-ON SUPPORT BRACKET



This bracket can be used and adapted for specific applications where standard supports are unsuitable.



NIKO Profile No.	23.000	24.000	25.000	26.000	27.000
Support Bracket No. Zinc plated	23.B00	24.B00	25.B00	26.B00	27.B00
Support Bracket Black No	23.B50	24.B50	25.B50	26.B50	27.B50
Dimension <i>l</i> mm	55	68	90	110	120
Dimension <i>a</i> mm	49	60	80	100	114
Dimension <i>h</i> mm	45	54	75	97	134
Dimension <i>s</i> mm	4	4,5	6	8	10

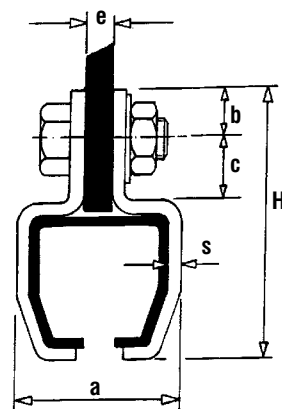
SPLIT SUPPORT BRACKET



This bracket is generally used for attaching the reinforcement spine and used in conjunction with the adjustable suspension bracket for variable height configurations.



NIKO Profile No.	23.000	24.000	25.000	26.000	27.000
Support Bracket No.	23.B03	24.B03	25.B03	26.B03	27.B03
Dimension a mm	48	56,5	77	96	110
Dimension b mm	14	14	32	30	20
Dimension c mm	18	20	25	27	26
Dimension e mm	8	8	10	10	15
Dimension H mm	76,5	88	131	150	180
Material	55x4	55x4	90x6	110x8	120x10
Screw type	M 12x35		M 16x50		M 16x70

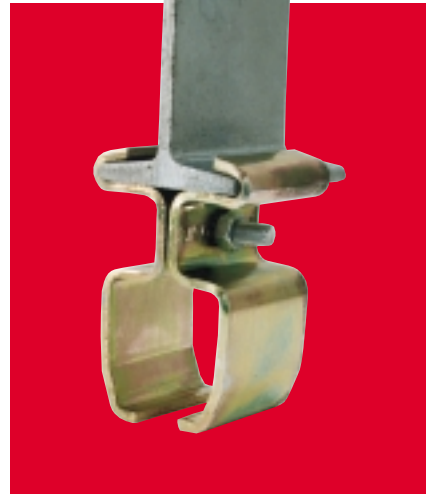




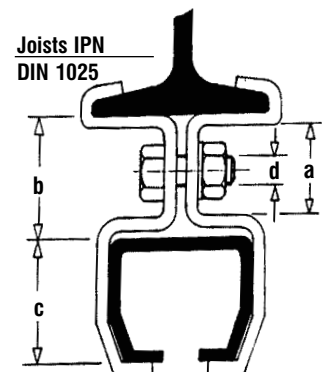
SPLIT SUSPENSION BRACKET



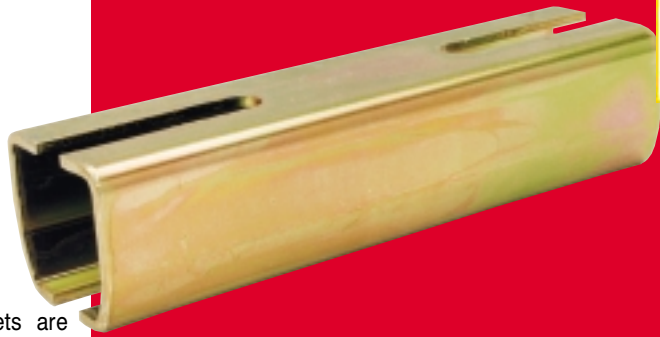
This bracket is used for mounting directly to the underside flange of a parallel I beam.



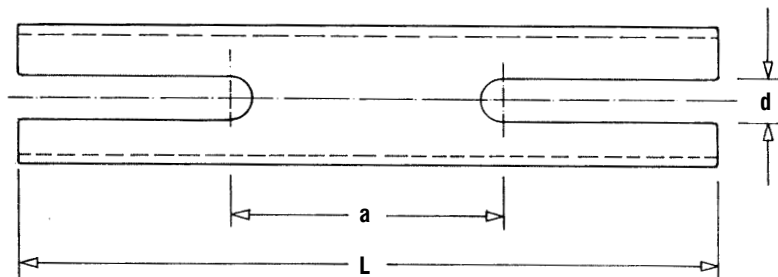
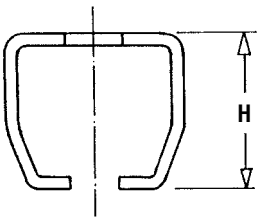
NIKO Profile No.	23.000	24.000	25.000	26.000	27.000
Dimension b in mm	34	34	56	63	90
Dimension c in mm	35	44	60	75	110
Dimension a in mm	25	25	42	44	-
Dimension d in mm	9 ϕ	9 ϕ	17 ϕ	17 ϕ	17 ϕ
Screw type	M8x30	M8x30	M16x50	M16x50	M16x70
Material	55x4	55x4	90x6	110x8	120x10
SPLIT SUSPENSION BRACKET JOIST IPN DIN 1025					
FOR IPN 80X42	23.B08	24.B08			
FOR IPN 100X50	23.B10	24.B10	25.B10		
FOR IPN 120X58	23.B12	24.B12	25.B12		
FOR IPN 140X66	23.B14	24.B14	25.B14		
FOR IPN 160X74		24.B16	25.B16	26.B16	
FOR IPN 180X82		24.B18	25.B18	26.B18	
FOR IPN 200X90		24.B20	25.B20	26.B20	27.B20
FOR IPN 220X98			25.B22	26.B22	27.B22
FOR IPN 240X106			25.B24	26.B24	27.B24
FOR IPN 260X113			25.B26	26.B26	27.B26



ADJUSTABLE SUSPENSION BRACKET



These brackets are designed to accommodate variations in support steelwork distances relative to the track level. They are normally used in conjunction with the split support brackets.



NIKO Profile No.	23.000	24.000	25.000	26.000
BRACKET No.	23.B38		25.B38	
Dim. L mm	198		260	
Dim. a mm	76		90	
Dim. d mm	12,5		18	
Dim. H mm	35		60	

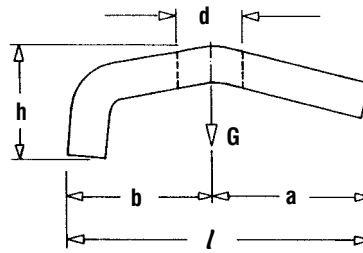
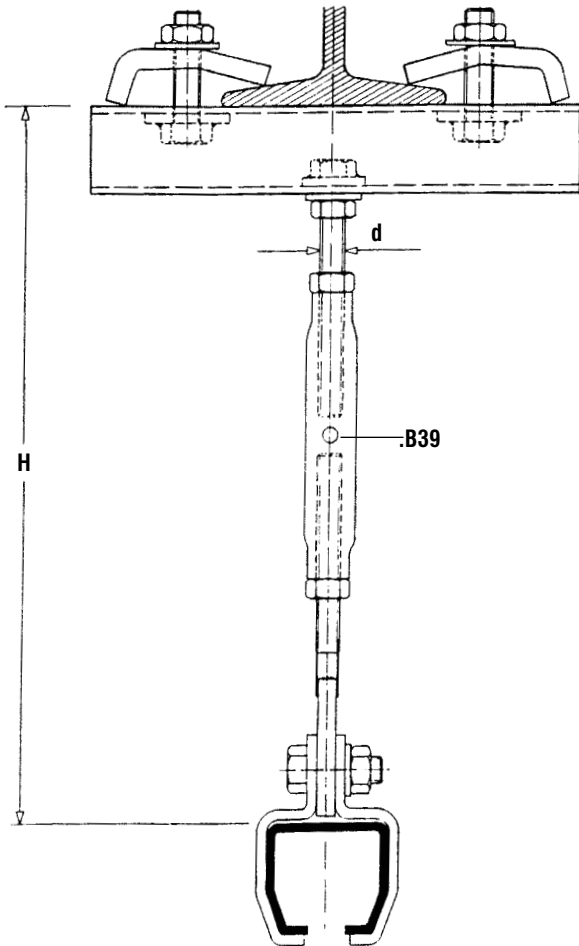


svealyft

JOIST CLAMP



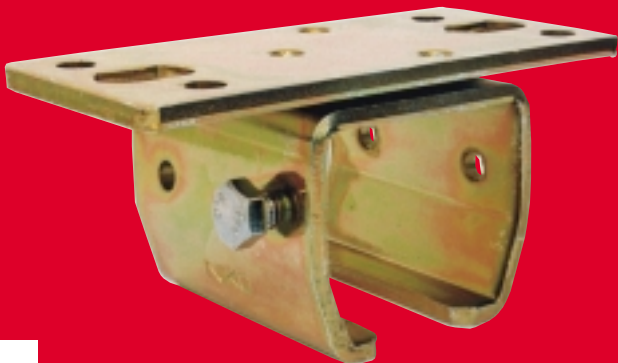
This item is used for clamping the adjustable suspension bracket to the support steelwork and is supplied with bolt and square nut.



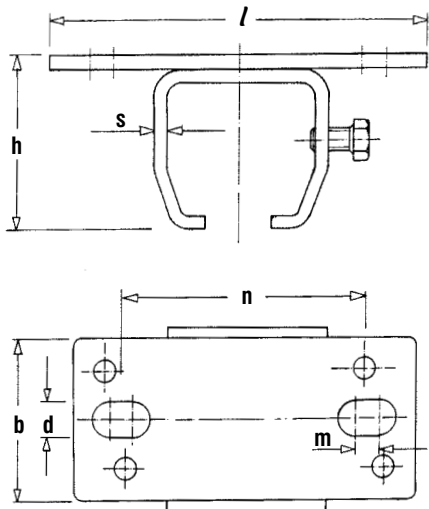
NIKO Profile No.	23.000	24.000	25.000	26.000
TURNBUCKLE No.	23.B39		25.B39	
H max mm		375		530
H min mm		265		380
d mm		M10		M16

NIKO Profile No.	Part.1 Joist clamp	P Max kgr	Dimension in mm					Material
			a	b	d	l	h	
23.000 to 24.000	23.B37 for IPN 80 to 260	400	30	32	12.5	62	24	50X8
25.000 to 26.000	25.B37 for IPN 120 to 360	800	40	40	16.5	80	30	70X10

CEILING SUPPORT



This bracket is designed for bolting direct to overhead steelwork or ceiling.



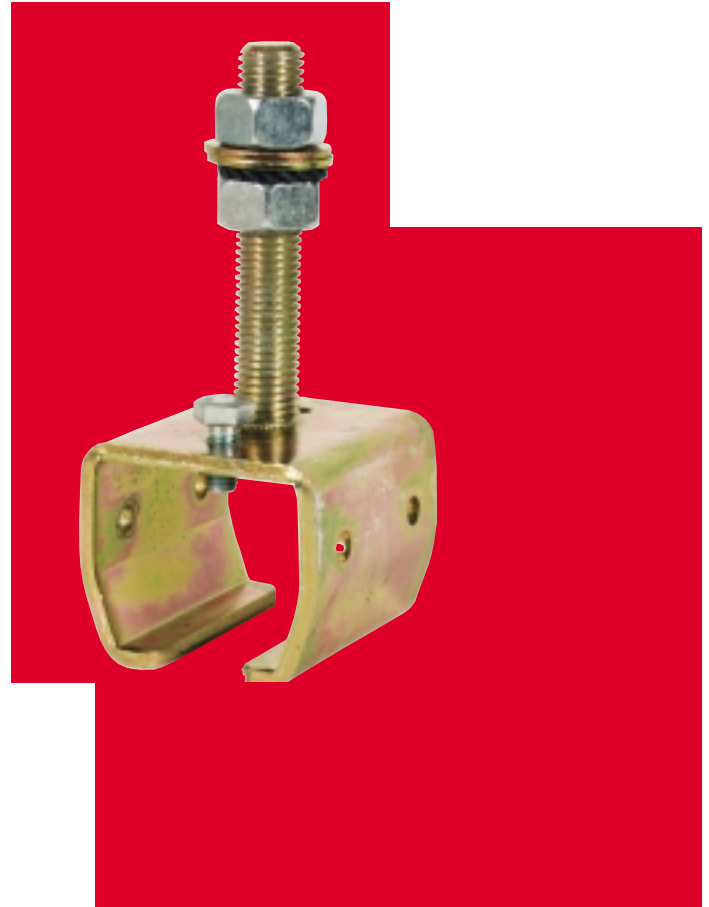
NIKO Profile No.	23.000	24.000	25.000	26.000	27.000
Support Bracket No.	23.B02	24.B02	25.B02	26.B02	27.B02
Dimension <i>l</i> mm	115	130	170	210	260
Dimension <i>h</i> mm	51	60	83	107	150
Dimension <i>b</i> mm	55	68	90	110	120
Dimension <i>d</i> mm	11	13	17	22	22
Dimension <i>n</i> mm	80	94	124	148	178.5
Dimension <i>s</i> mm	4	4.5	6	8	10
Dimension <i>m</i> mm	8	8	10	12	23.5



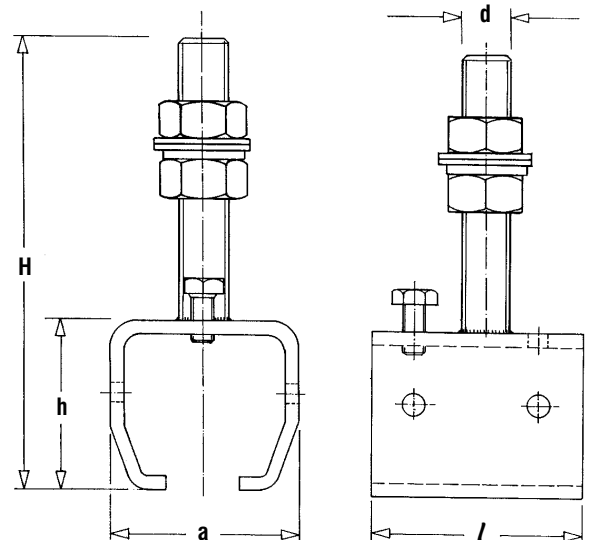
ADJUSTABLE BRACKET



It allows us to adjust the height of the rails and to correct any misalignments.




NIKO Profile No.	23.000	24.000	25.000	26.000	27.000
Bracket No.	23.B04	24.B04	25.B04	26.B04	27.B04
Dimension H mm	123	145	198	292	353
Dimension h mm	45	54	75	97	134
Dimension l mm	55	68	90	110	120
Dimension a mm	49	60	80	100	114
Dimension d mm	M12	M16	M20	M24	M30

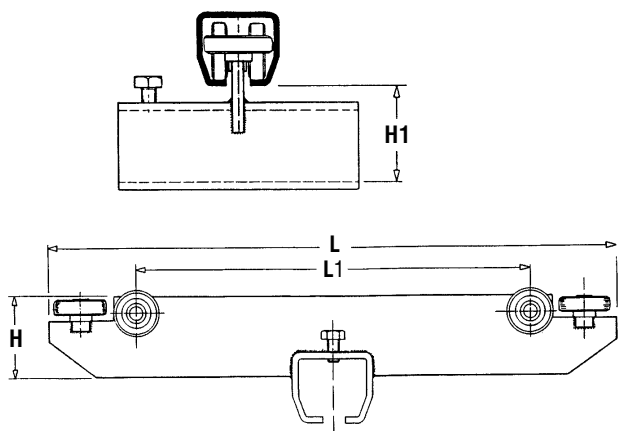


END CARRIAGE TROLLEYS



 This range of trolleys are fitted with horizontal guide rollers and is used for connecting the moving cross members to the downshop tracks.

For standard crane applications it is recommended that only one side of the cross member is fixed allowing the other side to move freely to facilitate track misalignment.



NIKO Profile No.	23.000	24.000	25.000	26.000	27.000
With track joint	23.T54	24.T54	25.T54	26.T54	27.T54
L (mm)	350	400	450	500	600
H	50	70	100	120	180
L1	242	270	276	280	340
H1	52	63	91	109	163

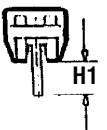
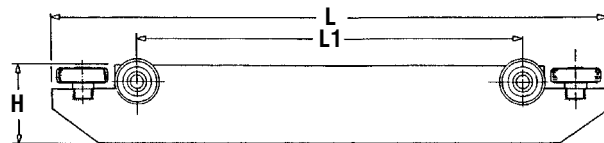


SPECIAL END CARRIAGE TROLLEYS

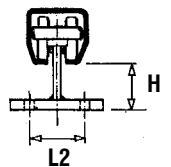
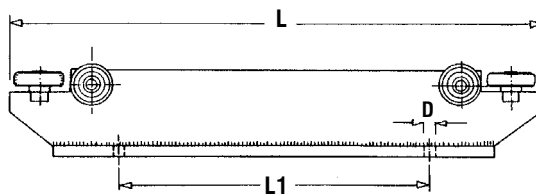


We can supply double carriages for overhead cranes for suspending two NIKO rails as well as carriages for transverse profile of different type for special constructions either through welding or through mounting bolts.

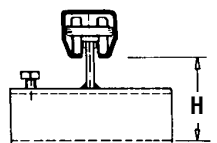
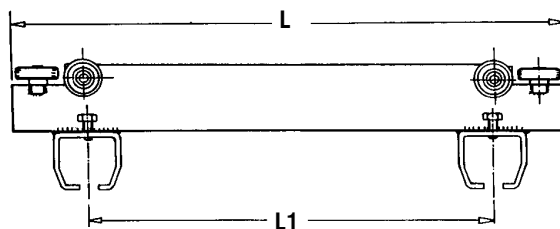
NIKO Profile No.	23.000	24.000	25.000	26.000	27.000
End carriage	23.T52	24.T52	25.T52	26.T52	27.T52
L (mm)	350	400	450	500	600
H	50	70	100	120	150
L1	242	270	276	280	340
H1	23	35	52	60	59



NIKO Profile No.	23.000	24.000	25.000	26.000	27.000
With flat plate	23.T51	24.T51	25.T51	26.T51	27.T51
L (mm)	350	400	450	500	600
H	31	45	64	72	74
L2	36	46	60	80	100
L1	200	220	220	260	300
D	8.5	11	13	17	21




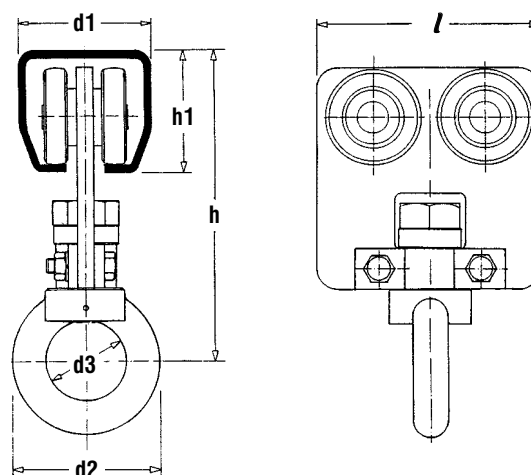
NIKO Profile No.	23.000	24.000	25.000	26.000	27.000
With double track joint	23.T53	24.T53	25.T53	26.T53	27.T53
L (mm)	410	630	700	820	860
H	64	74	91	126	152
L1	300	495	500	600	600



4-WHEEL LOAD TROLLEY WITH EYE




 This trolley is suitable for hoists with hook suspension.

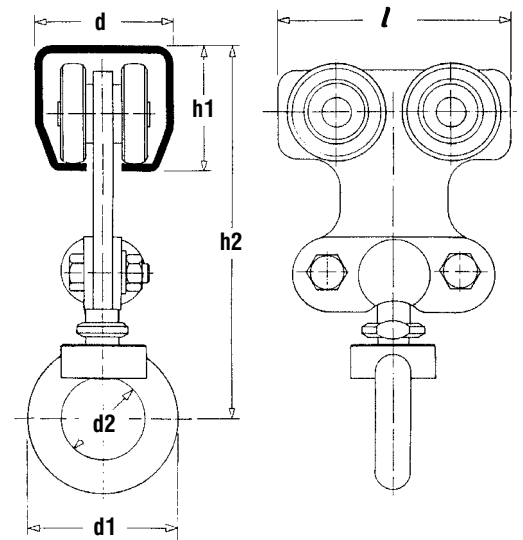


NIKO Profile Ref.	23.000	24.000	25.000	26.000	27.000
Item Ref	23.T40	24.T40	25.T40	26.T40	27.T40
SWL Kg	80	150	250	500	800
Dimension d1 mm	40	48.5	65	80	90
Dimension l mm	68	90	110	150	200
Dimension d2 mm	54	63	72	90	108
Dimension d3 mm	30	35	40	50	60
Dimension h1 mm	35	43.5	60	75	110
Dimension h mm	107	120	153	198	273



4-WHEEL TROLLEY WITH A ROTATING EYE NUT DIN 582

 With a specific ball in order for the ring to rotate and oscillate 15°

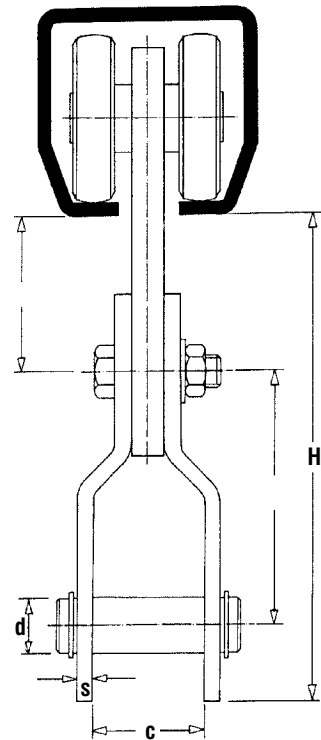


NIKO Profile No.	23.000	24.000	25.000	26.000	27.000
Item Ref	23.T20	24.T20	25.T20	26.T20	27.T20
SWL Kg	40	80	200	400	800
Dimension d mm	40	48.5	65	80	90
Dimension l mm	70	90	110	140	200
Dimension d1 mm	54	63	72	90	108
Dimension d2 mm	30	35	40	50	60
Dimension h1 mm	35	43.5	60	75	110
Dimension h2 mm	120	140	182	220	292

FOUR WHEEL TROLLEY WITH CLEVIS PIN



Four wheel trolley with clevis pin, suitable for hoists with fixed lugs eye's on hook suspension.

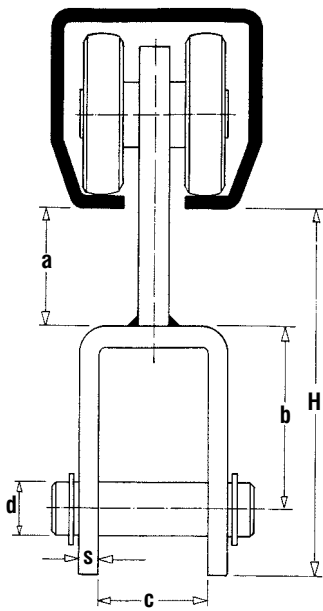


NIKO Profile No.	24.000	25.000	26.000
Item Ref	24.T44	25.T44	26.T44
SWL Kg	80	200	400
Dim a mm	39	50	55
Dim b mm	50	74	85
Dim c mm	30	38	40
Dim d mm	16	20	22
Dim s mm	4	5	6
Dim H mm	120	162	195

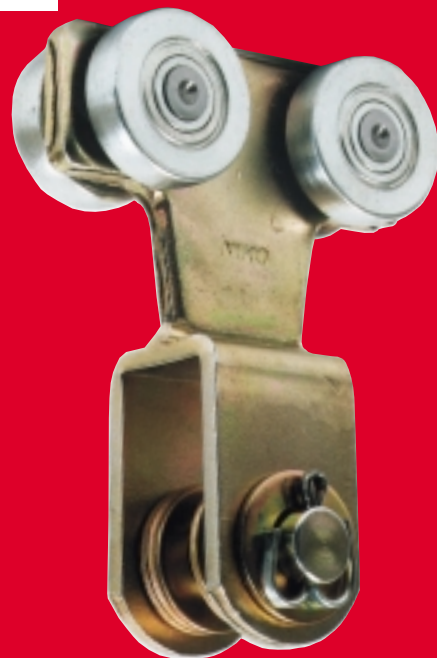
FOUR WHEEL TROLLEY WITH PIN (WELDED)



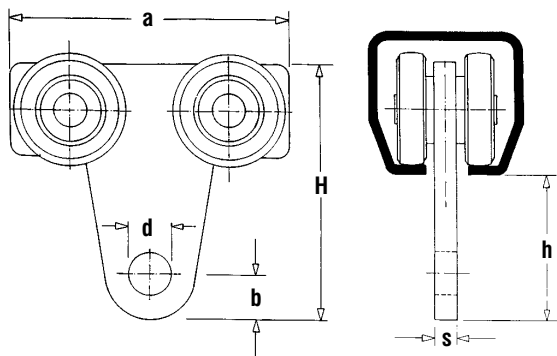
Four wheel trolley (welded) with pin, suitable for direct suspension of winch or loads.



NIKO Profile No.	24.000	25.000	26.000
Item Ref	24.T46	25.T46	26.T46
SWL Kg	80	200	400
Dim a mm	34	34	44
Dim b mm	44	56	68
Dim c mm	32	32	40
Dim d mm	16	20	22
Dim s mm	6	6	8
Dim H mm	139	175	212



4-WHEEL TROLLEY WITH MOUNTING HOLE

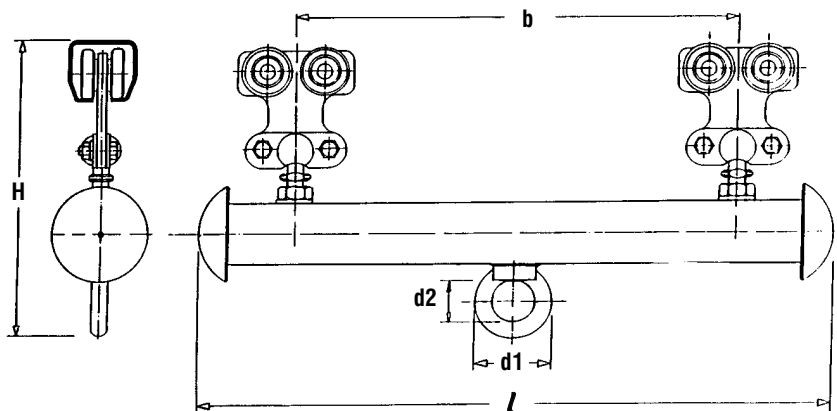


NIKO Profile No.	23.000	24.000	25.000	26.000	27.000
Item Ref.	23.T10	24.T10	25.T10	26.T10	27.T10
SWL Kg	40	80	200	400	800
Dimension h mm	44	54	62	70	108
Dimension a mm	80	100	120	145	210
Dimension b mm	12	15	20	24	35
Dimension d mm	10	14	18	22	26
Dimension H mm	70	90	110	130	200
Dimension s mm	6	8	10	12	15

LOAD CARRIER WITH EYE DIN 582 USING TWO 4-WHEEL TROLLEYS

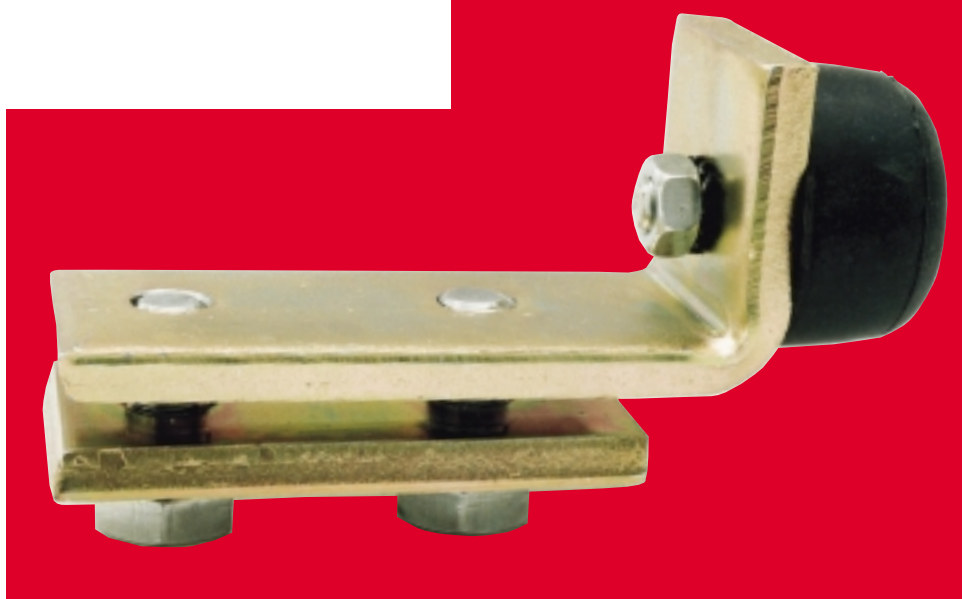


This trolley is suitable for increased load applications.

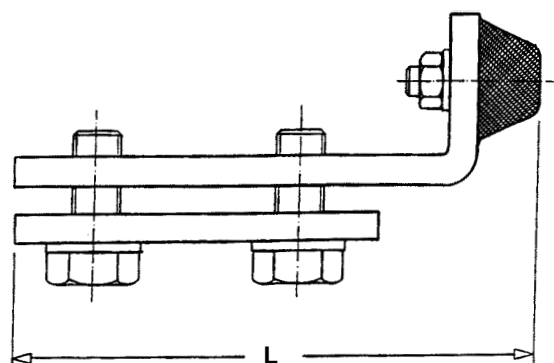


NIKO Profile No.	23.000	24.000	25.000	26.000	27.000
Item Ref.	23.T24	24.T24	25.T24	26.T24	27.T24
SWL Kg	80	150	250	750	1000
Dimension <i>l</i> mm	300	450	600	700	1000
Dimension <i>H</i> mm	185	220	275	324	426
Dimension <i>b</i> mm	180	300	420	500	700
Dimension <i>d1</i> mm	54	63	72	90	108
Dimension <i>d2</i> mm	30	35	40	50	60

TRACK END STOP



The end stop has a rubber buffer and is required at the end of the open profiles. Used in conjunction with a fixed cross bolt.

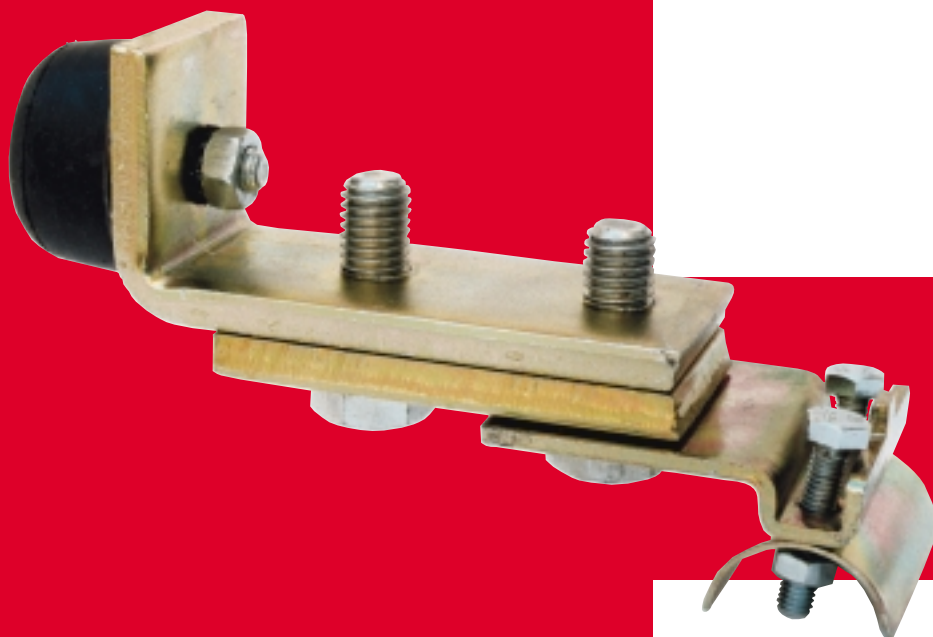


NIKO End Stop	23.X01	24.X01	25.X01	26.X01	27.X01
Profile No.	23.000	24.000	25.000	26.000	27.000
Dim. L mm.	73	87	122	145	145

END STOP WITH CABLE END CLAMP

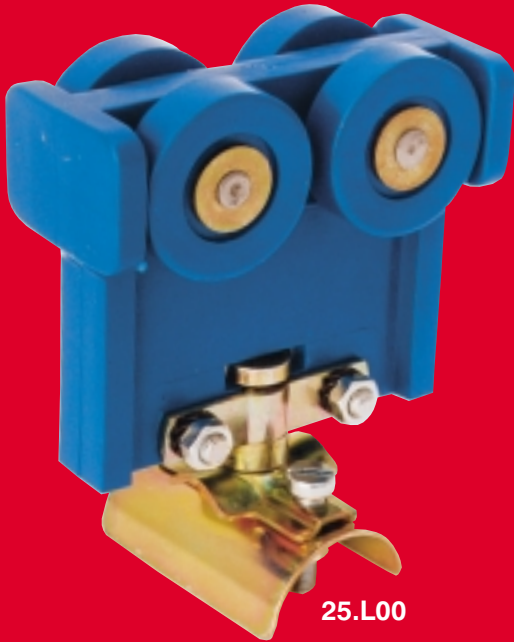


This item is utilised on cranes that hold electrical hoist and serves as an end stop and cable end clamp combined. It is installed at the power source end of the track and reinforced tracks.

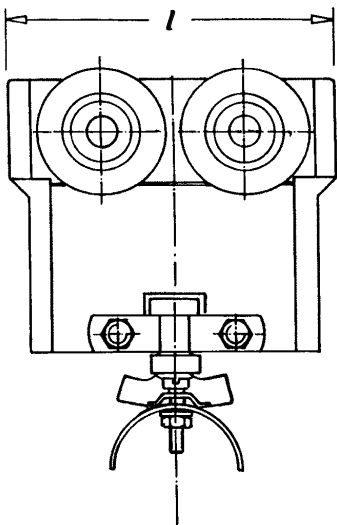


NIKO Profile No.	23.000	24.000	25.000	26.000	27.000
End stop/clamp No.	23.K02	24.K02	25.K02	26.K02	27.K02

CABLE TROLLEY (NYLON)

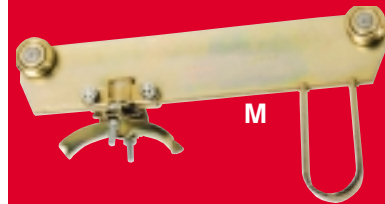


This trolley is used for carrying flat cable for electrical power supply and can be adapted for hoses and round cables.



NIKO Profile No.	21.000	23.000	24.000	25.000	26.000	27.000
Cable Trolley No.	23.L00		25.L00		27.L00	
For cable dimensions	flat up to 23x10mm & round up to 15mm diameter		flat up to 23x10 mm & round to up 15mm diameter		flat up to 23x10 mm & round up to 15mm diameter	
Cable Trolley No.	23.L01	25.L01	27.L01			
For cable dimensions	flat up to 55x20mm	flat up to 55x20 mm	flat up to 55x20 mm			
Dimension <i>l</i> mm	60	80	80			

NIKO PROFIL No.		21.000	23.000	24.000
DIAMETER 8 UP TO 15mm	ROUND CABLE TROLLEY	21.L15	23.L15	24.L15
	ROUND CABLE TOWING TROLLEY	21.M15	23.M15	24.M15
	ROUND CABLE END CLAMP	21.K15	23.K15	24.K15
DIAMETER 16 UP TO 24mm	ROUND CABLE TROLLEY	21.L24	23.L24	24.L24
	ROUND CABLE TOWING TROLLEY	21.M24	23.M24	24.M24
	ROUND CABLE END CLAMP	21.K24	23.K24	24.K24
DIAMETER 25 UP TO 43mm	ROUND CABLE TROLLEY	-	23.L32	24.L32
	ROUND CABLE TOWING TROLLEY	-	23.M32	24.M32
	ROUND CABLE END CLAMP	-	23.K32	24.K32
DIAMETER 33 UP TO 43mm	ROUND CABLE TROLLEY	-	23.L43	24.L43
	ROUND CABLE TOWING TROLLEY	-	23.M43	24.M43
	ROUND CABLE END CLAMP	-	23.K43	24.K43
DIAMETER 44 UP TO 60mm	ROUND CABLE TROLLEY	-	-	24.L60
	ROUND CABLE TOWING TROLLEY	-	-	24.M60
	ROUND CABLE END CLAMP	-	-	24.K60



CABLE TROLLEYS WITH MORE THAN ONE CABLE CLAMP



FLAT CABLE TROLLEY For dimensions up to	21.L10 55x20 mm	23.L10 55x30mm	24.L10 55x40mm	25.L10 150x50mm	26.L10 200x50mm
For dimensions up to		23.L11 100x30mm	24.L11 100x40mm		

FLAT CABLE TOWING TROLLEY For dimensions up to	21.M10 55x20mm	23.M10 55x30mm	24.M10 55x40mm	25.M10 150x50mm	26.M10 200x50mm
For dimensions up to		23.M11 100x30mm	24.M11 100x40mm		



FLAT CABLE END CLAMP For dimensions up to	21.K10 55x20mm	23.K10 55x30mm	23.K10 55x40mm	25.K10 150x50mm	26.K10 200x50mm
For dimensions up to		23.K11 100x30mm	24.K11 100x40mm		