

**Protection classification:**
 II 2 GD c IIB T4


To ensure faultless operation the compressed air supply must be filtered and oiled.

Pneumatic chain hoist model CPA ATEX with suspension hook or with integrated trolley

Capacity 2000 - 10000 kg

The conception is in accordance with the design of the model CPE. With 100 % duty rating and an unlimited number of starts the model CPA is suitable for heavy duty applications. It is insusceptible to contamination, humidity and aggressive mediums from the outside. The hoists are composed of three main components which makes service easy and inexpensive.

Features

- Robust rotating piston motor has an adjustable spring pressure brake that holds the load secure even in the event of an air failure.
 - High starting torque due to switching valves in the motor body.
 - Sensitive control by means of 2 resp. 4 button pendant control with emergency stop.
 - Low noise emission due to large dimension silencer.
 - Designed for operating pressures of 4 to 6 bar.
 - The standard, oil bath lubricated planetary gearbox is particularly smooth running and enables a low overall height.
 - The 5-pocket load chain sheave, manufactured from wear resistant case hardening steel, is matched perfectly to the load chain to guarantee smooth and precise chain motion.
 - The assembly of component parts result in a low overall height (up to 3000 kg only one chain fall).
 - The replaceable chain guide is robust and precision machined.
 - Copper-plated suspension and load hooks.
 - The standard case hardened and zinc-plated link chain is matched perfectly to the load chain to guarantee smooth and precise chain motion.
- All requirements of national and international standards and regulations are fulfilled.

Option

- Pneumatic, push and geared trolleys with solid bronze wheels.
- Rope control
- Load chain from stainless steel.
- Chain container
- Beam locking device for push and geared trolley.

Technical data model CPA ATEX

Model	EAN-No. 4025092*	Capacity in kg/ Number of chain falls	Lifting speed with rated load*	Lifting speed without load*	Lowering speed with rated load*	Hoist motor	Weight** suspension hook	Weight** push trolley	Weight** geared trolley	Weight** pneumatic trolley
			m/min	m/min	m/min	kW	kg	kg	kg	kg
CPA ATEX 20-8	-	2000/1	7.4	9.9	11.0	2.6	121	184	188	199
CPA ATEX 30-6	-	3000/1	6.0	9.9	13.0	3.2	121	184	188	199
CPA ATEX 40-4	-	4000/2	3.7	5.0	5.5	2.6	140	202	206	218
CPA ATEX 50-3	-	5000/2	3.4	5.0	6.0	3.0	140	202	206	218
CPA ATEX 60-3	-	6000/2	3.0	5.0	6.5	3.2	140	202	206	218
CPA ATEX 75-2	-	7500/3	2.0	3.3	4.3	3.2	-	-	-	-
CPA ATEX 100-2	-	10000/4	3.4	5.0	6.0	2 x 3.0	-	-	-	-

*Value for 6 bar (flow pressure), air consumption with rated load 4.7 m³/min. For CPA 100-2: 9.4 m³/min.

** Weight for standard 3 m lift. Other lifting heights available.



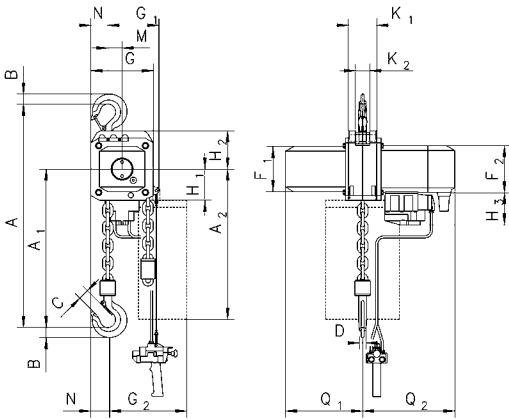
Technical data trolleys

Capacity	Size	Beam flange width b	Beam flange thickness t max.	Curve radius min.	Pneumatic trolley travel speed	Pneumatic trolley motor
kg		mm	mm	m	m/min	kW
2000 - 6000	A	98 - 180	27	2.0	18	0.55
2000 - 6000	B	180 - 300	27	1.8	18	0.55
7500 - 10000	B	125 - 310	40	1.8	-	-

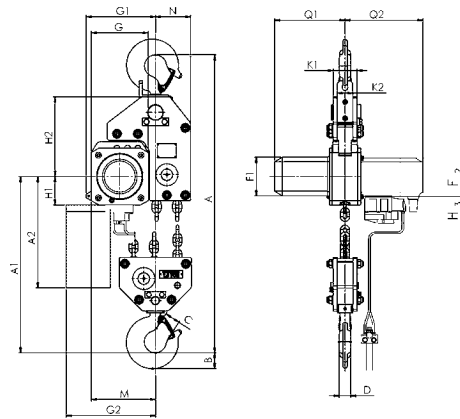
! Yale hoists and trolleys are not designed for passenger elevation applications and must not be used for this purpose.

Dimensions model CPA ATEX

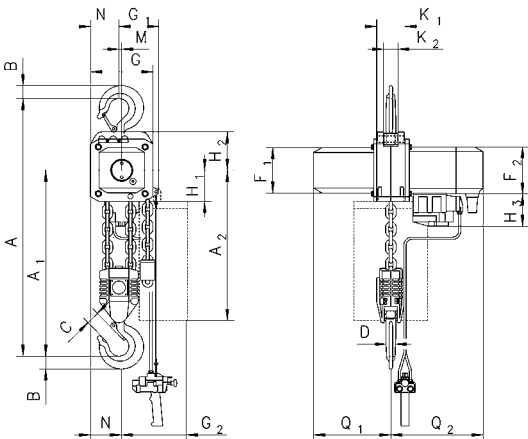
Model	CPA ATEX 20-8	CPA ATEX 30-6	CPA ATEX 40-4	CPA ATEX 50-3	CPA ATEX 60-3	CPA ATEX 75-2	CPA ATEX 100-2
A, mm	516	516	681	681	681	950	1.068
A1, mm	286	286	428	428	428	479	651
B, mm	35	35	45	45	47	60	60
C, mm	37	37	46	46	42	52	52
D, mm	24	24	30	30	30	40/45	40/45
F1, mm	160	160	160	160	160	160	160
F2, mm	165	165	165	165	165	165	165
G, mm	220	220	220	220	220	220	581
G1, mm	180	180	140	140	140	268	311
G2 (13 m), mm	258	258	218	218	218	-	-
G2 (21 m), mm	278	278	238	238	238	345	408
H1, mm	110	110	110	110	110	110	110
H2, mm	135	135	135	135	135	307	256
H3, mm	115	115	115	115	115	115	115
K1, mm	100	100	100	100	100	92	92
K2, mm	51	51	51	51	51	62	62
M, mm	50	50	9,6	9,6	9,6	139	181
N, mm	60	60	100	100	100	136	291
Q1, mm	272	272	272	272	272	272	272
Q2, mm	325	325	325	325	325	325	325



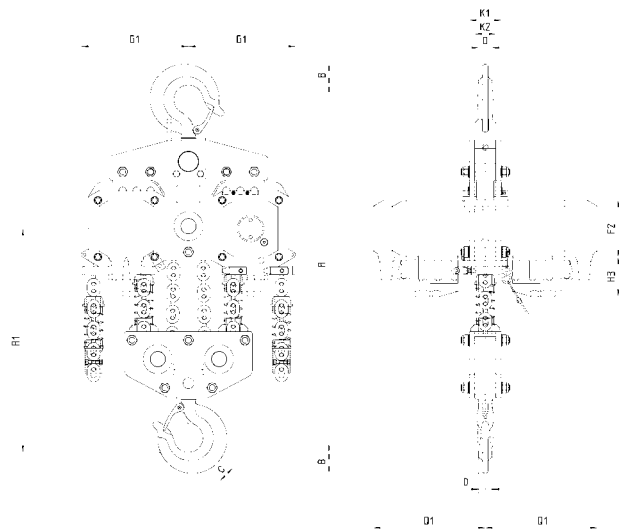
Model CPA ATEX with suspension hook, 2000 - 3000 kg, single fall



Model CPA ATEX with suspension hook, 7500 kg, three fall



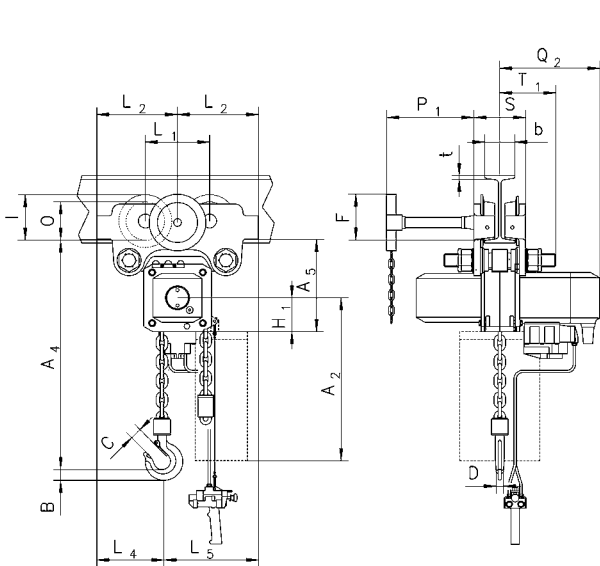
Model CPA ATEX with suspension hook, 4000 - 6000 kg, double fall



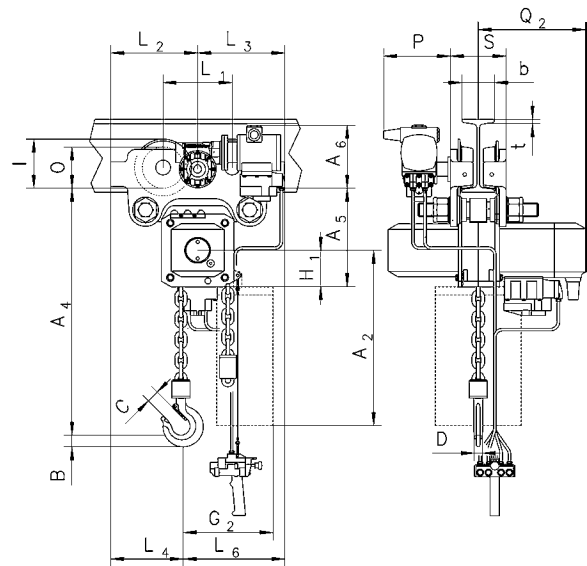
Model CPA ATEX with suspension hook, 10000 kg, four fall

Dimensions model CPA ATEX


Model	CPA ATEX 20-8	CPA ATEX 30-6	CPA ATEX 40-4	CPA ATEX 50-3	CPA ATEX 60-3	CPA ATEX 75-2	CPA ATEX 100-2
A2 (13 m), mm	430	430	430	430	430	-	-
A2 (21 m), mm	530	530	530	530	530	530	530
A4, mm	465	465	615	615	615	855	965
A5, mm	298	298	298	298	298	477	425
A6, mm	190	190	190	190	190	182	182
b, mm	A = 98 - 180/ B = 180 - 300	A = 98 - 180/ B = 180 - 300	A = 98 - 180/ B = 180 - 300	A = 98 - 180/ B = 180 - 300	A = 98 - 180/ B = 180 - 300	125 - 310	125 - 310
F, mm	150	150	150	150	150	113	113
I, mm	142,5	142,5	142,5	142,5	142,5	130	130
L1, mm	209	209	209	209	209	200	200
L2, mm	262,5	262,5	262,5	262,5	262,5	215	215
L3, mm	265	265	265	265	265	265	265
L4, mm	213	213	253	253	253	291	291
L5, mm	312	312	272	272	272	-	-
L6, mm	315	315	275	275	275	-	-
O, mm	125	125	125	125	125	150	150
P, mm	208	208	208	208	208	208	208
P1, mm	284	284	284	284	284	284	284
S, mm	b + 70	b + 70	b + 70	b + 70	b + 70	b + 98	b + 98
t, mm	27	27	27	27	27	40	40
T1 size A	182	182	182	182	182	-	-
T1 size B	242	242	242	242	242	270	270




Model CPA ATEX with integrated manual push or geared trolley



Model CPA ATEX with integrated pneumatic trolley

**Protection classification:**

-  II 2 GD c IIB T4 T 125° C X,
-  II 2 GD c IIB T3 T 145° C



Hand chain hoist model Yalelift 360 ATEX

Capacity 500 - 20000 kg

The hand chain hoist model Yalelift 360 once again proves its worth in an environment that far exceeds the requirements of a classical hand chain hoist.

On the basis of the European Directive 94/9/EC this model series has been further developed for the use in potentially explosive atmospheres (ATEX zones).

The temperature of the brake is especially critical for manual hoisting equipment used in explosive zones.

Tests have shown that the temperature increases significantly during the load lowering process. After analyzing potential ignition hazards, intensive temperature tests were carried out on the Yalelift 360.

To solve the problem of increased temperatures, a special cooling body was developed for the brake.

Features

- The revolutionary 360° rotating hand chain guide allows the operator to work from virtually any position, in confined spaces or above the load. The Yalelift can even be operated from the side of the load which also makes it possible to use the hoist for horizontal pulling or tensioning. Due to the additional flexibility, the operator is no longer forced to work in the danger zone near the load.
- The enclosed robust stamped steel housing protects all internal components even in the toughest conditions.
- Chain guide and gearbox are almost totally enclosed. Even under the toughest conditions the internal gearbox remains protected.
- The hardened load sheave with four precision machined pockets ensures accurate movement of the load chain.
- The extremely low headroom allows maximum use of the lifting height.
- The surface protected zinc-plated alloy steel load chains fulfil all requirements of current national and international standards and regulations. They are matched perfectly to the load chain sheave and guarantee smooth and precise chain motion.
- Explosion protected version with spark resistant coating.
- Copper-plated suspension and load hooks.

Option

- Load chain from stainless steel.
- Overload prevention device
- Chain container
- Beam locking device

Technical data model Yalelift 360 ATEX

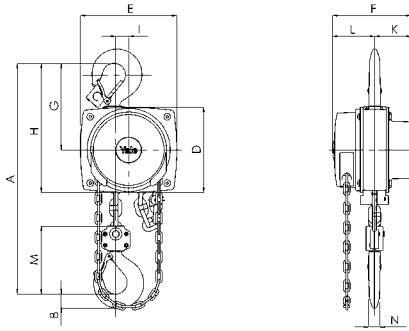
Model	EAN-No. 4025092*	Capacity kg	Number of chain falls	Chain dimensions d x p mm	Hand chain overhaul for 1 m lift m	Pull on hand chain at WLL daN	Weight at standard lift (3 m) kg
YL ATEX 500	*206365	500	1	5 x 15	30	21	9
YL ATEX 1000	*206419	1000	1	6 x 18	49	30	13
YL ATEX 2000	*206426	2000	1	8 x 24	71	32	20
YL ATEX 3000	*206440	3000	1	10 x 30	87	38	29
YL ATEX 5000	*206464	5000	2	10 x 30	174	34	38
YL ATEX 10000	*239547	10000	3	10 x 30	261	44	71
YL ATEX 20000	*251846	20000	6	10 x 30	522	2 x 44	196



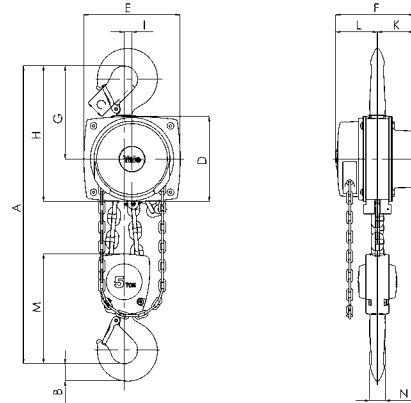
! Yale hoists and trolleys are not designed for passenger elevation applications and must not be used for this purpose.

Dimensions model Yalelift 360 ATEX

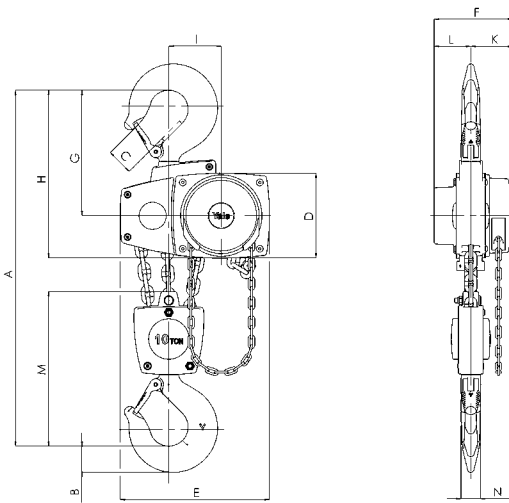
Model	YL ATEX 500	YL ATEX 1000	YL ATEX 2000	YL ATEX 3000	YL ATEX 5000	YL ATEX 10000	YL ATEX 20000
Amin., mm	300	335	395	520	654	825	1.010
B, mm	17	22	30	38	45	68	85
C, mm	24	29	35	40	47	68	64
D, mm	133	156	182	220	220	220	303
E, mm	148	175	203	250	250	383	555
F, mm	139	157	183	204	204	204	250
G, mm	139	164	192	225	242	326	391
H, mm	206	242	283	335	352	436	501
I, mm	24	24	31	34	21	136	-
K, mm	61	70	83	95	95	95	396
L, mm	79	87	100	109	109	109	125
M, mm	110	125	156	178	285	401	471
N, mm	14	19	22	30	37	50	56



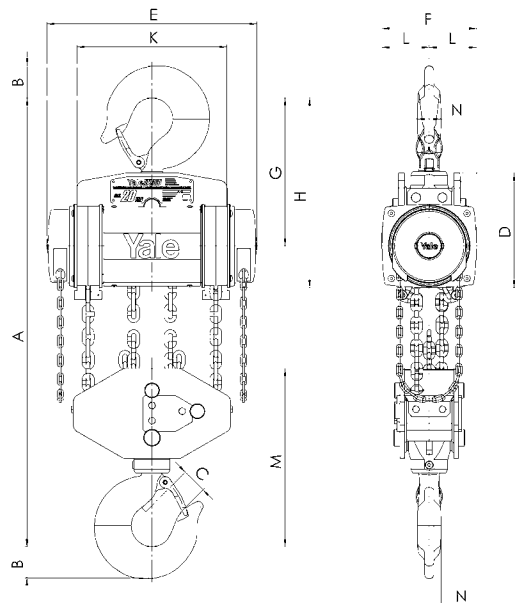
Model Yalelift 360 ATEX, 500 - 3000 kg, single fall



Model Yalelift 360 ATEX, 5000 kg, double fall



Model Yalelift 360 ATEX, 10000 kg, three fall



Model Yalelift 360 ATEX, 20000 kg, six fall

Hand chain hoist with integrated push or geared type trolley model Yalelift IT ATEX

Capacity 500 - 10000 kg

The combination of the Yalelift 360 with a low headroom manual trolley provides even more flexibility in the application of the Yalelift 360.

Features

- All units of this series up to a capacity of 3000 kg are provided with single chain fall and the min. headroom has been further reduced. Ideal for applications with low ceilings and limited headroom.
- The proven and almost stepless adjustment system allows quick and easy assembly of the trolley.
- Trolleys up to 5 t are offered for two beam ranges. Range A for a flange width up to 180 mm is standard and covers approx. 80 % of all requirements. Conversion to range B for beam width up to 300 mm can be easily accomplished.
- The solid bronze trolley wheels are designed for a max. beam profile incline of 14 % (DIN 1025 - part 1), excellent rolling features are guaranteed by prelubricated, encapsulated ball bearings.
- Anti-tilt and anti-drop devices are standard.
- Explosion protected version with spark resistant coating.
- Trolleys equipped with rubber buffers.
- Copper-plated load hooks.

Option

- Load chain from stainless steel.
- Overload prevention device
- Chain container
- Beam locking device



Protection classification:

-  II 2 GD c IIB T4 T 125° C X,
-  II 2 GD c IIB T3 T 145° C



Technical data model Yalelift ITP ATEX with integrated push type trolley

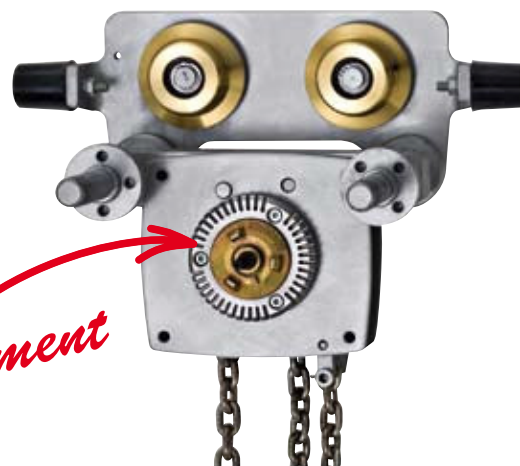
Model	EAN-No. 4025092*	Capacity in kg/ number of chain falls	Size	Beam flange width b mm	Beam flange thickness t max. mm	Min. curve radius m	Weight* kg	Weight* with beam brake kg
YLITP ATEX 500	*205177	500/1	A	50 - 180	19	0.9	20	26
YLITP ATEX 500	-	500/1	B	180 - 300	19	0.9	21	27
YLITP ATEX 1000	*205382	1000/1	A	50 - 180	19	0.9	27	35
YLITP ATEX 1000	-	1000/1	B	180 - 300	19	0.9	29	37
YLITP ATEX 2000	*206310	2000/1	A	58 - 180	19	1.15	44	52
YLITP ATEX 2000	-	2000/1	B	180 - 300	19	1.15	46	54
YLITP ATEX 3000	*206488	3000/1	A	74 - 180	27	1.5	77	86
YLITP ATEX 3000	-	3000/1	B	180 - 300	27	1.4	79	88
YLITP ATEX 5000	*206525	5000/2	A	98 - 180	27	2.0	125	135
YLITP ATEX 5000	-	5000/2	B	180 - 300	27	1.8	129	139
YLITP ATEX 10000	-	10000/3	A	125 - 310	40	1.8	-	-

*Weight for standard 3 m lift. Other lifting heights available.

Technical data model Yalelift ITG ATEX with integrated geared type trolley

Model	EAN-No. 4025092*	Capacity in kg/ number of chain falls	Size	Beam flange width b mm	Beam flange thickness t max. mm	Min. curve radius m	Weight* kg	Weight* with beam brake kg
YLITG ATEX 500	*206334	500/1	A	50 - 180	19	0.9	24	31
YLITG ATEX 500	-	500/1	B	180 - 300	19	0.9	25	32
YLITG ATEX 1000	*206341	1000/1	A	50 - 180	19	0.9	32	40
YLITG ATEX 1000	-	1000/1	B	180 - 300	19	0.9	33	41
YLITG ATEX 2000	*206358	2000/1	A	58 - 180	19	1.15	49	57
YLITG ATEX 2000	-	2000/1	B	180 - 300	19	1.15	50	58
YLITG ATEX 3000	*206549	3000/1	A	74 - 180	27	1.5	82	91
YLITG ATEX 3000	-	3000/1	B	180 - 300	27	1.4	84	93
YLITG ATEX 5000	*206563	5000/2	A	98 - 180	27	2.0	130	140
YLITG ATEX 5000	-	5000/2	B	180 - 300	27	1.8	134	144
YLITG ATEX 10000	*520072	10000/3	A	125 - 310	40	1.8	-	-

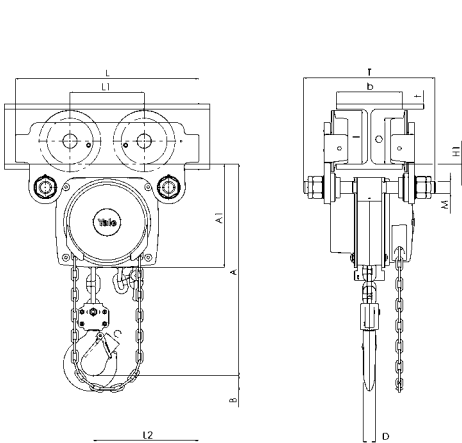
*Weight for standard 3 m lift. Other lifting heights available.



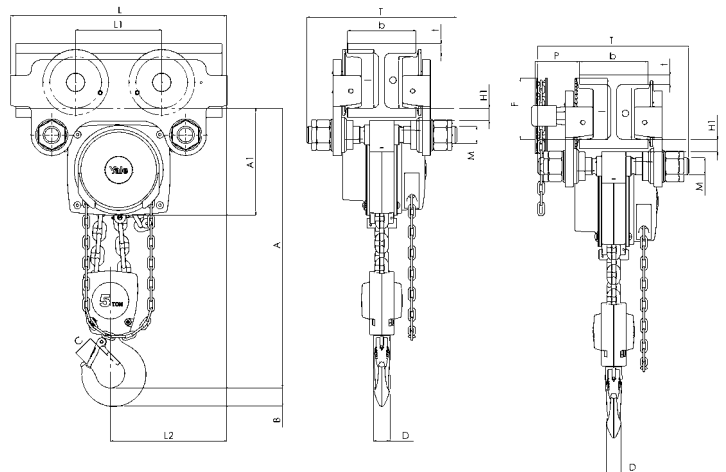
! Yale hoists and trolleys are not designed for passenger elevation applications and must not be used for this purpose.

Dimensions model Yalelift IT ATEX

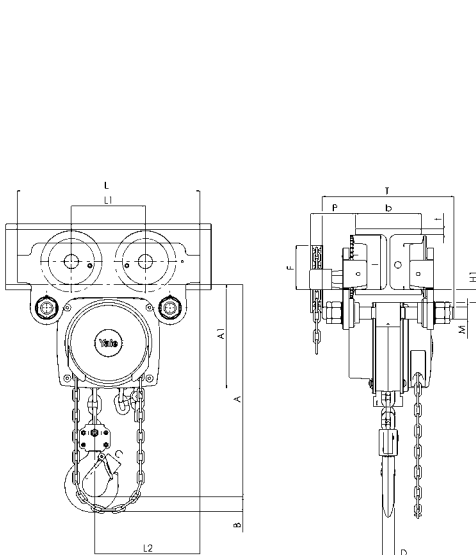
Model	YLIT ATEX 500	YLIT ATEX 1000	YLIT ATEX 2000	YLIT ATEX 3000	YLIT ATEX 5000	YLIT ATEX 10000
Amin., mm	245	272	323	382	550	784
A1, mm	158	178	205.5	252	260.5	380
A2, mm	-	-	-	-	-	-
B, mm	17	22	30	38	45	68
C, mm	24	29	35	40	47	68
D, mm	14	19	22	30	37	50
F (Geared), mm	92	92	91	107	149.5	113
H1, mm	24.5	24	23.5	32	30.5	55
I (Pushed), mm	71.5	71.5	95.5	131	142.5	169
I (Geared), mm	76.5	76.5	98	132.5	148.5	169
L, mm	270	310	360	445	525	430
L1, mm	130	130	150	180	209	200
L2, mm	159	175	207	256	283	261
M, mm	M 18	M 22	M 27	M 30	M 42	M 48
O, mm	60	60	80	112	125	150
P (Geared), mm	108	110	112	112	117	158
T (area A), mm	280	290	305	320	-	-
T (area B), mm	400	410	425	440	484	540



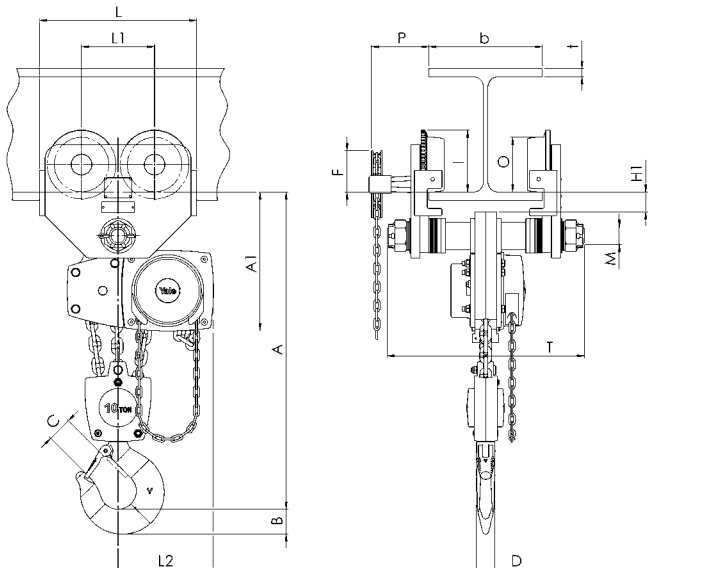
Model Yalelift ITP ATEX, 500 - 3000 kg, single fall



Model Yalelift ITP/ITG ATEX 5000 kg, double fall



Model Yalelift ITG ATEX, 500 - 3000 kg, single fall



Model Yalelift ITG ATEX, 10000 kg, three fall



Hand chain hoist with integrated push or geared type trolley (low headroom) model Yalelift LH ATEX

Capacity 500 - 10000 kg

The hand chain hoist model Yalelift LH with integrated low headroom manual trolley is the consequent further development of the Yalelift IT. Wherever an even smaller headroom is essential, the Yalelift LH is the ideal choice.



Features

- The specially developed chain reeving system and chain guide allow the bottom block to be pulled laterally to the hoist even further up and almost against the beam flange.
- The integrated design of the innovative Yalelift LH uses the same manual trolleys as incorporated in the Yalelift IT series.
- All models of the LH series up to 3000 kg capacity are provided with single chain fall.
- The proven and almost stepless adjustment system allows quick and easy assembly of the trolley.
- The trolleys are offered for two beam ranges. Range A for a flange width up to 180 mm is standard and covers approx. 80 % of all requirements. Conversion to range B for beam width up to 300 mm can be easily accomplished.
- The low headroom version of the Yalelift IT is adjustable to fit a wide range of beam profiles (e.g. INP, IPE, IPB).
- The solid bronze trolley wheels are designed for a max. beam profile incline of 14 % (DIN 1025 - part 1), excellent rolling features are guaranteed by prelubricated, encapsulated ball bearings.
- Anti-tilt and anti-drop devices are standard.
- Explosion protected version with spark resistant coating.
- Trolleys equipped with rubber buffers.
- Copper-plated load hooks.

Option

- Load chain from stainless steel.
- Overload prevention device
- Chain container
- Beam locking device

Protection classification:

-  II 2 GD c IIB T4 T 125° C X,
-  II 2 GD c IIB T3 T 145° C



Technical data model Yalelift LH ATEX with integrated push type trolley

Model	EAN-No. 4025092*	Capacity in kg/ number of chain falls	Size	Beam flange width b mm	Beam flange thickness t max. mm	Min. curve radius m	Weight* at standard lift (3 m) - P kg	Weight* at standard lift (3 m) with beam brake - P kg
YLLH ATEX 500	*592291	500/1	A	60 - 180	19	0.9	27	33
YLLH ATEX 500	-	500/1	B	180 - 300	19	0.9	27	34
YLLH ATEX 1000	*592314	1000/1	A	70 - 180	19	0.9	35	43
YLLH ATEX 1000	-	1000/1	B	180 - 300	19	0.9	36	44
YLLH ATEX 2000	*592321	2000/1	A	82 - 180	19	1.15	61	69
YLLH ATEX 2000	-	2000/1	B	180 - 300	19	1.15	62	70
YLLH ATEX 3000	*592338	3000/1	A	100 - 180	19	1.5	107	116
YLLH ATEX 3000	-	3000/1	B	180 - 300	19	1.4	109	118
YLLH ATEX 5000	*592345	5000/2	A	110 - 180	27	2.0	152	162
YLLH ATEX 5000	-	5000/2	B	180 - 300	27	1.8	156	166
YLLH ATEX 10000	-	10000/3	A	125 - 180	40	1.8	on request	on request
YLLH ATEX 10000	-	10000/3	B	180 - 310	40	1.8	on request	on request

Technical data model Yalelift LH ATEX with integrated geared type trolley

Model	EAN-No. 4025092*	Capacity in kg/ number of chain falls	Size	Beam flange width b mm	Beam flange thickness t max. mm	Min. curve radius m	Weight* at standard lift (3 m) - G kg	Weight* at standard lift (3 m) with beam brake - G kg
YLLH ATEX 500	*594592	500/1	A	60 - 180	19	0.9	31	38
YLLH ATEX 500	-	500/1	B	180 - 300	19	0.9	32	38
YLLH ATEX 1000	*594608	1000/1	A	70 - 180	19	0.9	40	48
YLLH ATEX 1000	-	1000/1	B	180 - 300	19	0.9	41	49
YLLH ATEX 2000	*594615	2000/1	A	82 - 180	19	1.15	65	73
YLLH ATEX 2000	-	2000/1	B	180 - 300	19	1.15	67	75
YLLH ATEX 3000	*594622	3000/1	A	100 - 180	19	1.5	112	121
YLLH ATEX 3000	-	3000/1	B	180 - 300	19	1.4	114	123
YLLH ATEX 5000	*594639	5000/2	A	110 - 180	27	2.0	157	167
YLLH ATEX 5000	-	5000/2	B	180 - 300	27	1.8	161	171
YLLH ATEX 10000	-	10000/3	A	125 - 180	40	1.8	230	on request
YLLH ATEX 10000	-	10000/3	B	180 - 310	40	1.8	232	on request

*P = with pushed trolley

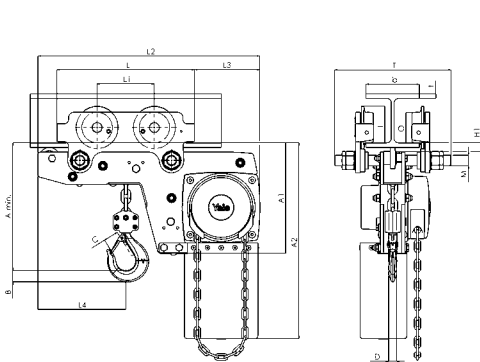
*G = with geared trolley



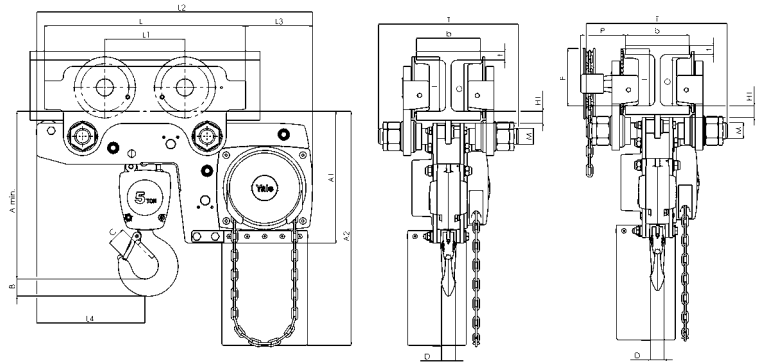
Yale hoists and trolleys are not designed for passenger elevation applications and must not be used for this purpose.

Dimensions model Yalelift LH ATEX

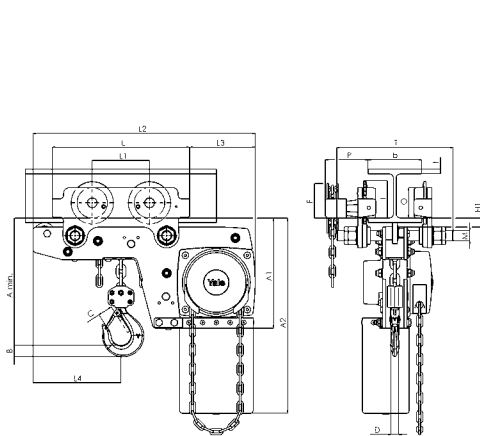
Model	YLLH ATEX 500	YLLH ATEX 1000	YLLH ATEX 2000	YLLH ATEX 3000	YLLH ATEX 5000	YLLH ATEX 10000
Amin., mm	188	211	264	316	425	565
A1, mm	223	250	289	346	345	365
A2, mm	381	427	511	614	612	665
B, mm	17	22	30	38	45	68
C, mm	24	29	35	40	47	68
D, mm	14	19	22	30	37	50
F (Geared), mm	92	92	91	107	150	150
H1, mm	24	24	24	32	31	45
I (Pushed), mm	72	72	96	131	143	170
I (Geared), mm	77	77	98	133	149	170
L, mm	270	310	360	445	525	485
L1, mm	130	130	150	180	209	225
L2, mm	444	488	582	690	720	805
L3, mm	124	135	172	203	175	215
L4, mm	184	201	230	265	283	348
M, mm	M 18	M 22	M 27	M 30	M 42	M 48
O, mm	60	60	80	112	125	150
P (Geared), mm	108	110	112	112	117	165
T (area A), mm	280	290	305	320	364	440
T (area B), mm	400	410	425	440	484	540



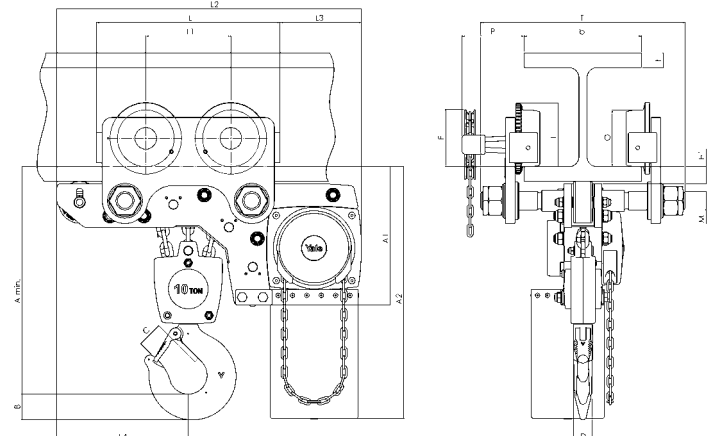
Model Yalelift LHP ATEX, 500 - 3000 kg, single fall



Model Yalelift LHP ATEX, 5000 kg, double fall



Model Yalelift LHG ATEX, 500 - 3000 kg, single fall



Model Yalelift LHG ATEX, 10000 kg, three fall





Push and geared type model HTP/G ATEX

Capacity 500 - 20000 kg

The trolley enables the exact positioning or easy traversing of large loads with either manual or powered hoisting equipment.

Features

- Adjustable to fit a wide range of beam widths and profiles (e.g. INP, IPE and IPB).
- The solid bronze trolley wheels are designed for a max. beam profile incline of 14 % (DIN 1025 - part 1), excellent rolling features are guaranteed by prelubricated, encapsulated ball bearings.
- Adjustments are made by rotating the clevis load bar which also ensures the centred positioning of the hoist in the clevis - no creeping to the left or the right.
- Explosion protected version with spark resistant coating.
- Trolleys equipped with rubber buffers.

Option

- Locking device to secure the trolley in position on the beam (park position e.g. on ships).
- Hand chain from stainless steel

No protection classification as no ignition source when utilized according to intended use.

Applicable in zone 1, although the protection classification of the utilized hoist has to be considered.

Technical data model HTP ATEX and model HTG ATEX

Model	EAN-No. 4025092*	Capacity kg	Size	Beam flange width b mm	Max. flange thickness t mm	Min. curve radius m	Effort at WLL daN	Weight* kg	Weight** kg
HTP ATEX 500	*573894	500	A	50 - 220	25	0.9	-	8.0	14.5
HTP ATEX 1000	*573900	1000	A	50 - 220	25	0.9	-	9.0	17.0
HTP ATEX 2000	*573917	2000	A	66 - 220	25	1.15	-	16.0	24.0
HTP ATEX 3000	*573924	3000	A	74 - 220	25	1.4	-	32.0	41.2
HTP ATEX 5000	*573931	5000	A	90 - 220	25	1.8	-	48.0	58.5
HTP ATEX 500	-	500	B	160 - 300	40	0.9	-	10.6	17.1
HTP ATEX 1000	-	1000	B	160 - 300	40	0.9	-	12.0	20.0
HTP ATEX 2000	-	2000	B	160 - 300	40	1.15	-	19.3	27.3
HTP ATEX 3000	-	3000	B	160 - 300	40	1.4	-	35.8	45.0
HTP ATEX 5000	-	5000	B	180 - 300	40	1.8	-	52.2	62.7
HTG ATEX 500	*573948	500	A	50 - 220	25	0.9	3	9.7	16.2
HTG ATEX 1000	*573955	1000	A	50 - 220	25	0.9	6	11.2	19.2
HTG ATEX 2000	*573962	2000	A	66 - 220	25	1.15	7	18.0	26.0
HTG ATEX 3000	*573979	3000	A	74 - 220	25	1.4	7	35.4	44.6
HTG ATEX 5000	*573986	5000	A	90 - 220	25	1.8	9	51.8	62.3
HTG ATEX 500	-	500	B	160 - 300	40	0.9	3	12.6	19.1
HTG ATEX 1000	-	1000	B	160 - 300	40	0.9	6	14.1	22.1
HTG ATEX 2000	-	2000	B	160 - 300	40	1.15	7	21.3	29.3
HTG ATEX 3000	-	3000	B	160 - 300	40	1.4	7	39.2	48.4
HTG ATEX 5000	-	5000	B	180 - 300	40	1.8	9	56.0	66.5
HTG ATEX 8000	*573702	8000	B	125 - 310	40	1.8	14	104.0	-
HTG ATEX 10000	*573719	10000	B	125 - 310	40	1.8	14	104.0	-
HTG ATEX 15000	*573726	15000	B	125 - 310	40	5.0	29	230.0	-
HTG ATEX 20000	*573733	20000	B	125 - 310	40	5.0	29	230.0	-

*Weight for HTG ATEX without hand chain

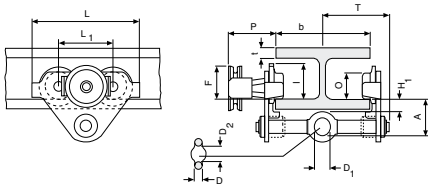
**Weight HTG ATEX with locking device without hand chain

Dimensions model HTP ATEX

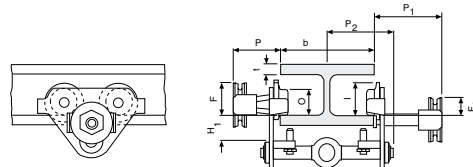
Model	HTP ATEX 500-A	HTP ATEX 1000-A	HTP ATEX 2000-A	HTP ATEX 3000-A	HTP ATEX 5000-A	HTP ATEX 500-B	HTP ATEX 1000-B	HTP ATEX 2000-B	HTP ATEX 3000-B	HTP ATEX 5000-B
A, mm	77	82.5	98.5	114	132.5	92	97.5	113.5	129	147.5
D, mm	16	17	22	26	33	16	17	22	26	33
D1, mm	25	30	40	48	60	25	30	40	48	60
D2, mm	30	35	47	58	70	30	35	47	58	70
F1, mm	46	46	46	46	45.5	46	46	46	46	45.5
H1, mm	30.5	30.5	30.5	30	30	45.5	45.5	45.5	45	45
I (HTP), mm	71.5	71.5	95.5	131	142.5	71.5	71.5	95.5	131	142.5
L, mm	260	260	310	390	450	260	260	310	390	450
L1, mm	130	130	150	180	209	130	130	150	180	209
O, mm	60	60	80	112	125	60	60	80	112	125
P1, mm	168	168	168	168	168	168	168	168	168	168
P2, mm	146	150	155	160	167.5	146	150	155	160	167.5
T, mm	146	150	155	160	167.5	187	187	189.5	191.5	191.5

Dimensions model HTG ATEX

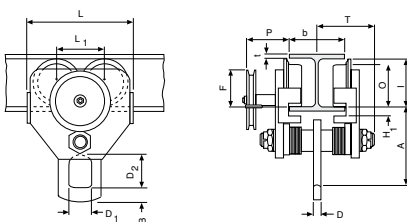
Model	HTG ATEX 500-A	HTG ATEX 1000-A	HTG ATEX 2000-A	HTG ATEX 3000-A	HTG ATEX 5000-A	HTG ATEX 500-B	HTG ATEX 1000-B	HTG ATEX 2000-B	HTG ATEX 3000-B	HTG ATEX 5000-B	HTG ATEX 8000-B	HTG ATEX 10000-B	HTG ATEX 15000-B	HTG ATEX 20000-B
A, mm	77	82.5	98.5	114	132.5	92	97.5	113.5	129	147.5	276	276	270	270
B, mm	-	-	-	-	-	-	-	-	-	-	52	52	70	70
D, mm	16	17	22	26	33	16	17	22	26	33	30	30	35	35
D1, mm	25	30	40	48	60	25	30	40	48	60	80	80	110	110
D2, mm	30	35	47	58	70	30	35	47	58	70	114	114	155	155
F (HTG), mm	91.5	91.5	90.5	107.5	149.5	91.5	91.5	90.5	107.5	149.5	113	113	113	113
F1, mm	46	46	46	46	45.5	46	46	46	46	45.5	-	-	-	-
H1, mm	30.5	30.5	30.5	30	30	45.5	45.5	45.5	45	45	45	45	45	45
I (HTG), mm	76.5	76.5	98	132.5	148.5	76.5	76.5	98	132.5	148.5	170	170	170	170
L, mm	260	260	310	390	450	260	260	310	390	450	430	430	870	870
L1, mm	130	130	150	180	209	130	130	150	180	209	200	200	200	200
L2, mm	-	-	-	-	-	-	-	-	-	-	-	-	115	115
O, mm	60	60	80	112	125	60	60	80	112	125	150	150	150	150
P (HTG), mm	110	110	110	110	110	110	110	110	110	110	163	163	163	163
P1, mm	168	168	168	168	168	168	168	168	168	168	-	-	-	-
P2, mm	146	150	155	160	167.5	146	150	155	160	167.5	-	-	-	-
T, mm	146	150	155	160	167.5	187	187	189.5	191.5	191.5	270	270	270	270



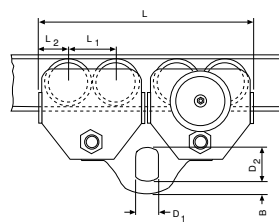
Model HTP/HTG ATEX, 500 - 5000 kg



Model HTP/G ATEX with locking device, 500 - 5000 kg



Model HTG ATEX, 10000 kg



Model HTG ATEX, 20000 kg



Ratchet lever hoist model UNOplus ATEX

Capacity 750 - 6000 kg

Further technical development turns the new ratchet lever hoist into the successor of our proven UNO model.

The versatile tool for lifting, pulling and securing of loads is characterised by its compact design, a robust stamped steel construction and a smooth free chaining device.

Features

- Forged suspension and load hooks, manufactured from non-ageing, high alloy tempering steel, yield under overload instead of breaking.
- Alloy steel link chain with zinc-plated finish, in accordance with national and international standards and regulations.
- Robust chain guide rollers eliminate fouling and jamming of chain on the load sheave.
- Robust chain end stop
- The standard free chaining device serves to quickly attach the load.
- Hand lever with ergonomic rubber grip and optimized bearing seat in the housing cover.
- Due to optimized gearing a minimum effort is required to operate the short hand lever.
- Automatic screw-and-disc type load brake with corrosion protected components.


Option

- Copper plated suspension and load hooks.
- Load chain from stainless steel

Protection classification:

 I M2

(Equipment group I is only valid for hoists used in the underground mining industry and their above ground facilities)

 II 2 GD c IIB T4 T 120° C X

(Equipment group II is valid for hoists used in all other areas)

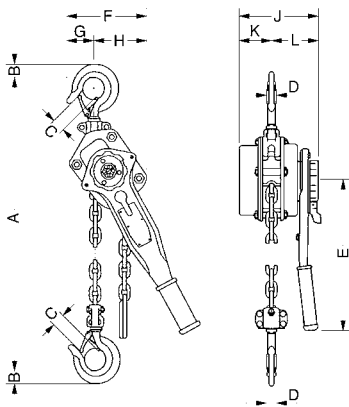


Technical data model UNOplus ATEX

Model	EAN-No. 4025092*	Capacity kg	Number of chain falls	Chain dimensions d x p mm	Lift with one full lever turn mm	Handle pull at WLL daN	Weight at standard lift (1.5 m) kg
UNOplus ATEX 750	*168342	750	1	6 x 18	20	20	7.2
UNOplus ATEX 1500	*168359	1500	1	8 x 24	22	35	12.5
UNOplus ATEX 3000	*168366	3000	1	10 x 30	17	40	21.5
UNOplus ATEX 6000	*168380	6000	2	10 x 30	9	40	32.0

Dimensions model UNOplus ATEX

Model	UNOplus ATEX 750	UNOplus ATEX 1500	UNOplus ATEX 3000	UNOplus ATEX 6000
Amin., mm	340	410	510	690
B, mm	22	28	36	45
C, mm	26	32	40	44
D, mm	16	21	27	33
E, mm	250	330	380	380
F, mm	150	170	220	220
G, mm	70	80	100	100
H, mm	80	90	120	120
J, mm	150	180	210	210
K, mm	60	80	90	90
L, mm	90	100	120	120

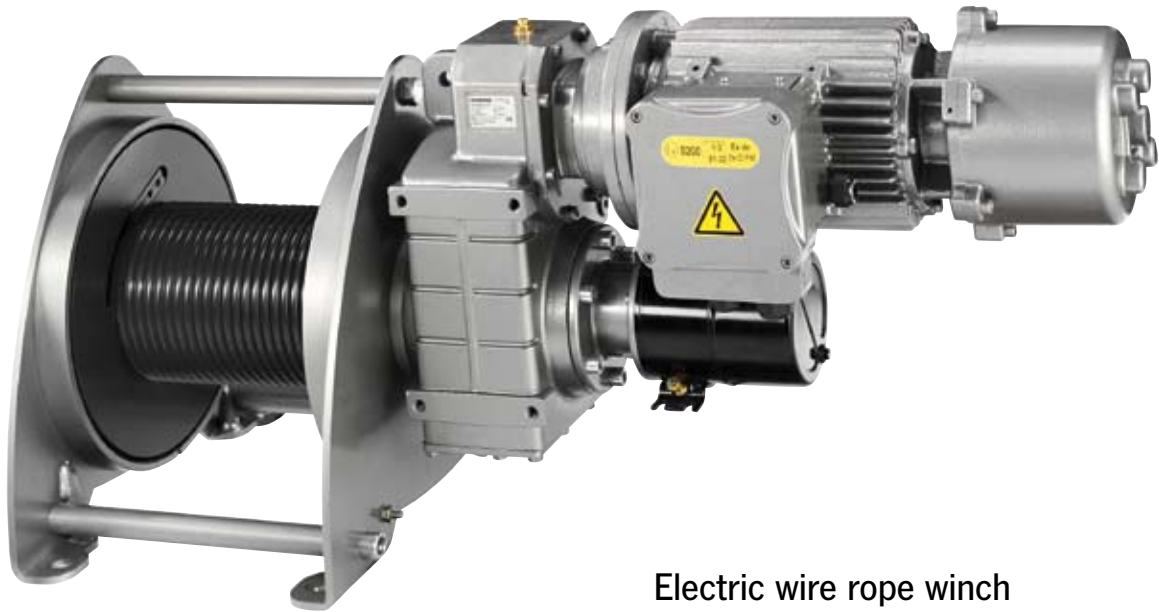


Model UNOplus ATEX



Option: Copper-plated suspension and load hooks

! Yale hoists and trolleys are not designed for passenger elevation applications and must not be used for this purpose.



Option

- Different ambient temperatures
- Different operating voltages
- Electric overload protection for winches with a load capacity below 1000 kg
- Infinitely variable speed regulation
- Rope pressure drum
- Slack rope switch
- Gear limit switch
- Special surface coating
- Multi compartment drum or drum extensions for a higher rope capacity.
- Sheaves, pulley blocks (ATEX-compliant Ex II 2 GD IIB T4 135° C IP 65).
- Special wire ropes for ATEX-areas with copper-plated load hook.

Protection classification:

Ex II 2 GD de IIB T4 T 135° C



Electric wire rope winch model BETA-EX

Lifting capacity 320 - 7500 daN

Wire rope winches of the series BETA-EX are designed according to the EU Directives 94/9/EG and MRL 2006/42/EG. The models are usable in any place, where the risk of ignition of explosive atmosphere exists. (Mixture of air, gases, fumes and dust/air-mixture, respectively). Due to a specially-tailored modular system, the suitable winch for each individual application can be put together easily. The BETA-EX is characterized by the excellent workmanship in connection with the reliable and stable gear motors.

Features

- Electric control incorporated in a flame-proof housing
Ex II 2 GD de IIB T4 T 135° C
- Electric control not ATEX-compliant
(Mounting outside of ATEX-area)
- Hand-actuated auxiliary switch in ATEX-design with Up/Down and emergency stop for an enhanced operating safety.
- From a load capacity of 1000 kg equipped as standard with an overload protection.
- Standard operating voltage:
380 - 420 V, 3-phases, 50 Hz - Euro-voltage
- Insulation class F
- Grooved drum and one rope fixation on each flanged wheel.
- Suitable ambient temperature:
-20° C to +40° C.

Application area

Chemical or petrochemical industry,
biogas plants, paint shops

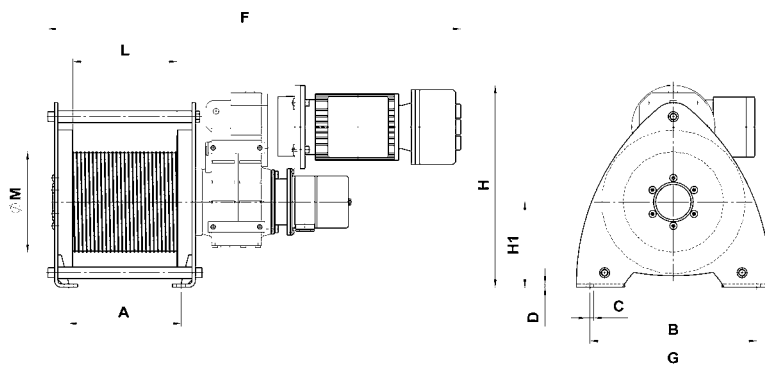
Technical data model BETA-EX

Art.-No.	Size	Pulling force 1 st layer kg	FEM classification	Lifting speed m/min	Motor kW	Weight without rope kg	Recommended rope diameter* mm	Useable rope length	
								1 st layer m	Top rope layer/m
040039001	P1	320	2m	5.9	0.37	82.4	5	16.2	77.8
040039003	P1	320	2m	13.8	0.75	89.9	5	16.2	77.8
040039004	P1	320	2m	19.0	1.1	106	5	16.2	77.8
040039020	P1.5	500	2m	6.0	0.55	95.9	6	13.62	67.58
040039021	P1.5	500	2m	13.1	1.1	113	6	13.62	67.58
040039023	C1.5	630	1Am	6.8	0.75	95.9	6	10.76	54.76
040039024	C1.5	630	1Am	14.4	1.5	113	6	10.76	54.76
040039031	P2	800	2m	4.7	0.75	125.9	8	17.1	85.5
040039033	P2	800	2m	11.4	1.5	151.5	8	17.1	85.5
040039034	P2	800	2m	20.5	3	151.5	8	17.1	85.5
040039037	C2	980	1Am	3.4	0.55	125.9	9	11	77.4
040039038	C2	980	1Am	6.7	1.1	143	9	11	77.4
040039039	C2	980	1Am	16.6	3	151.5	9	11	77.4
040039050	P3	1250	2m	5.2	1.1	203.5	12	16.3	61.3
040039051	P3	1250	2m	10.4	2.2	215	12	16.3	61.3
040039052	P3	1250	2m	13.8	3	215	12	16.3	61.3
040039055	C3	1600	1Am	3.9	1.1	203.5	12	12.1	87.7
040039057	C3	1600	1Am	10.3	3	215	12	12.1	87.7
040039058	C3	1600	1Am	19.2	5.5	287.4	12	12.1	87.7
040039059	E3	2000	1Bm	3.1	1.1	203.5	12	9.7	73.7
040039060	E3	2000	1Bm	8.3	3	215	12	9.7	73.7
040039061	E3	2000	1Bm	15.5	5.5	287.4	12	9.7	73.7
040039065	P3.5	2500	2m	4.9	2.2	262	14	13.8	53.9
040039067	P3.5	2500	2m	9.3	4	301.6	14	13.8	53.9
040039068	P3.5	2500	2m	12.9	5.5	338.4	14	13.8	53.9
040039070	C3.5	3200	1Am	4.0	2.2	262	14	11.4	85.6
040039072	C3.5	3200	1Am	7.6	4	301.6	14	11.4	85.6
040039073	C3.5	3200	1Am	10.6	5.5	338.4	14	11.4	85.6
040039081	C4	4000	1Am	5.7	4	502.6	18	12.7	98.3
040039082	C4	4000	1Am	10.4	7.5	539.4	18	12.7	98.3
040039083	C4	4000	1Am	15.5	11	617.5	18	12.7	98.3
040039085	E4	5000	1Bm	4.7	4	502.6	16	11.9	91.5
040039086	E4	5000	1Bm	8.6	7.5	539.4	16	11.9	91.5
040039087	E4	5000	1Bm	12.7	11	617.5	16	11.9	91.5
040039094	C5	6300	1Am	2.9	3	1047.4	20	16.4	123.5
040039095	C5	6300	1Am	6.5	7.5	1111.4	20	16.4	123.5
040039096	C5	6300	1Am	9.6	11	1205.5	20	16.4	123.5
040039097	E5	7500	1Bm	2.3	3	1047.4	20	13.4	104.8
040039098	E5	7500	1Bm	5.3	5.5	1111.4	20	13.4	104.8
040039099	E5	7500	1Bm	7.8	11	1205.5	20	13.4	104.8

*recommended rope nominal strength 1960 N/mm² (available upon request)

Dimensions model BETA-EX

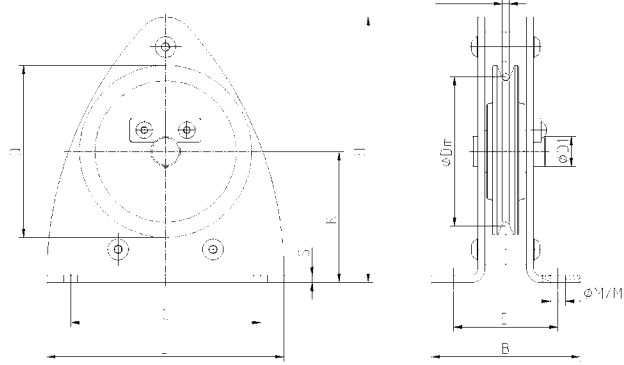
Art.-No.	Size	A mm	B mm	Ø C mm	D mm	F mm	G mm	H mm	H1 mm	L mm	Ø M mm
040039001	P 1	215	300	13.5	6	805	340	320	150	200	175
040039003	P 1	215	300	13.5	6	874	340	320	150	200	175
040039004	P 1	215	300	13.5	6	944	340	320	150	200	175
040039020	P 1.5	215	300	13.5	6	888	340	370	150	200	175
040039021	P 1.5	215	300	13.5	6	958	340	370	150	200	175
040039023	C 1.5	215	300	13.5	6	888	340	370	150	200	138
040039024	C 1.5	215	300	13.5	6	958	340	370	150	200	138
040039031	P 2	270	400	18	8	987	465	472	205	250	242
040039033	P 2	270	400	18	8	1089	465	472	205	250	242
040039034	P 2	270	400	18	8	1089	465	472	205	250	242
040039037	C 2	270	400	18	8	987	465	472	205	250	175
040039038	C 2	270	400	18	8	1057	465	472	205	250	175
040039039	C 2	270	400	18	8	1089	465	472	205	250	175
040039050	P 3	320	510	22	10	1160	570	598	260	300	295
040039051	P 3	320	510	22	10	1192	570	598	260	300	295
040039052	P 3	320	510	22	10	1192	570	598	260	300	295
040039055	C 3	320	510	22	10	1160	570	598	260	300	218
040039057	C 3	320	510	22	10	1192	570	598	260	300	218
040039058	C 3	320	510	22	10	1330	570	598	260	300	218
040039059	E 3	320	510	22	10	1160	570	598	260	300	175
040039060	E 3	320	510	22	10	1192	570	598	260	300	175
040039061	E 3	320	510	22	10	1330	570	598	260	300	175
040039065	P 3.5	320	510	22	10	1204	570	672	260	300	295
040039067	P 3.5	320	510	22	10	1280	570	672	260	300	295
040039068	P 3.5	320	510	22	10	1341	570	672	260	300	295
040039070	C 3.5	320	510	22	10	1204	570	672	260	300	242
040039072	C 3.5	320	510	22	10	1280	570	672	260	300	242
040039073	C 3.5	320	510	22	10	1341	570	672	260	300	242
040039081	C 4	380	660	26	12	1418	720	816	325	350	295
040039082	C 4	380	660	26	12	1553	720	816	325	350	295
040039083	C 4	380	660	26	12	1667	720	816	325	350	295
040039085	E 4	380	660	26	12	1418	720	816	325	350	242
040039086	E 4	380	660	26	12	1553	720	816	325	350	242
040039087	E 4	380	660	26	12	1667	720	816	325	350	242
040039094	C 5	430	800	34	15	1752	882	1060	400	400	364
040039095	C 5	430	800	34	15	1638	882	1060	400	400	364
040039096	C 5	430	800	34	15	1822	882	1060	400	400	364
040039097	E 5	430	800	34	15	1752	882	1060	400	400	295
040039098	E 5	430	800	34	15	1638	882	1060	400	400	295
040039099	E 5	430	800	34	15	1822	882	1060	400	400	295



Wire rope sheave block for BETA-EX electric wire rope winches model DSRB

Choose the easy way for rope guidance! - The steel sheave block for wire rope guidance DSRB S for BETA-EX electric wire rope winches. The dynamic all-rounder with variable rope and sheave diameters and cable deflections of up to 180° can move loads of up to 8 t with ease and absolute reliability.

Typical for Pfaff-silberblau is the high standard of quality: With a sheave block for manual and powered operation, equipped with grease-filled, sealed ball-bearings as standard. A carefully coordinated system of application-specific cable diameters and matching turned precision cable groove ensures that the unit is also wear-free.

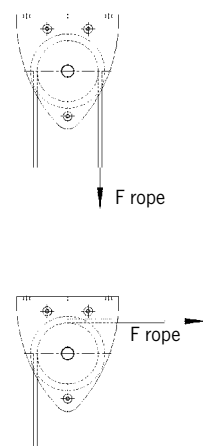


Technical data model DSRBX

Art.-No.	Model	D Ø mm	Rope diameter mm	Dm Ø mm	FEM classification	Max. tensile load (kg) at deflection		Ball bearing
						90°	180°	
033447103	DSRBX S 90/4	90	4	80	2 m	700	500	6004ZZ
033447104	DSRBX S 145/5	145	5	125	4 m	1100	800	6205ZZ
033447105	DSRBX S 145/6	145	6	125	2 m	1100	800	6205ZZ
033447107	DSRBX S 185/8	185	8	160	2 m	2300	1630	6306ZZ
033447108	DSRBX S 185/9	185	9	162	1 Am	2300	1630	6306ZZ
033447111	DSRBX S 270/12	270	12	246	2 m	2500	1800	6208ZZ
033447117	DSRBX S 325/14	325	14	297	2 m	4500	3200	6310ZZ
033447113	DSRBX S 400/16	400	16	368	3 m	5000	3800	6310ZZ
033447114	DSRBX S 400/18	400	18	364	2 m	5000	3800	6310ZZ
033447115	DSRBX S 490/20	490	20	450	3 m	8000	6000	6313ZZ

Dimensions model DSRBX

Art.-No.	Model	D1 mm	L mm	C mm	H mm	B mm	E mm	S mm	K mm	M/M1 mm
033447103	DSRBX S 90/4	20	120	90	134	85	62	4	65	9/9
033447104	DSRBX S 145/5	25	200	160	224	125	88	6	110	11.5/13
033447105	DSRBX S 145/6	25	200	160	224	125	88	6	110	11.5/13
033447107	DSRBX S 185/8	30	245	195	273	138	106	8	135	13.5/15
033447108	DSRBX S 185/9	30	245	195	273	138	106	8	135	13.5/15
033447111	DSRBX S 270/12	40	360	290	407	191	138	10	202	18/20
033447117	DSRBX S 325/14	50	440	350	490	260	180	12	242	22/25
033447113	DSRBX S 400/16	50	530	430	612	302	212	15	310	26/30
033447114	DSRBX S 400/18	50	530	430	612	302	212	15	310	26/30
033447115	DSRBX S 490/20	65	650	580	694	313	220	16	340	34/40



Protection classification
Ex II 2 GD IIB T4 135° C





Hand winch with load pressure brake model OMEGA-EX

Lifting capacity 630 and 1000 daN

The hand winch OMEGA Ex is a complete new construction and was developed especially for the high safety requirements in potentially explosive atmospheres.

All components of the OMEGA-Ex are designed to avoid effectively an inadmissible heating of the surfaces. Carefully selected materials and the sophisticated construction of the winch prevent the occurrence of mechanically caused sparks, for example by intrusion of foreign materials.

Features

- Winch housing made of aluminum permanent mold casting for a low own weight, rope drum made of steel, chemically nickel-plated for a high versatility.
- Integrated load pressure brake.
- Closed gear with oil bath lubrication. The large oil volume ensures a high cooling effect.
- Equipotential bonding to avoid electrostatic charging.
- Pivotal crank handle.
- Suitable for ambient temperatures of -20° C to +40° C.

Application area

Chemical or petrochemical industry,
biogas plants, paint shops

Protection classification

Ex II 2 GD ck IIB T3 195° C



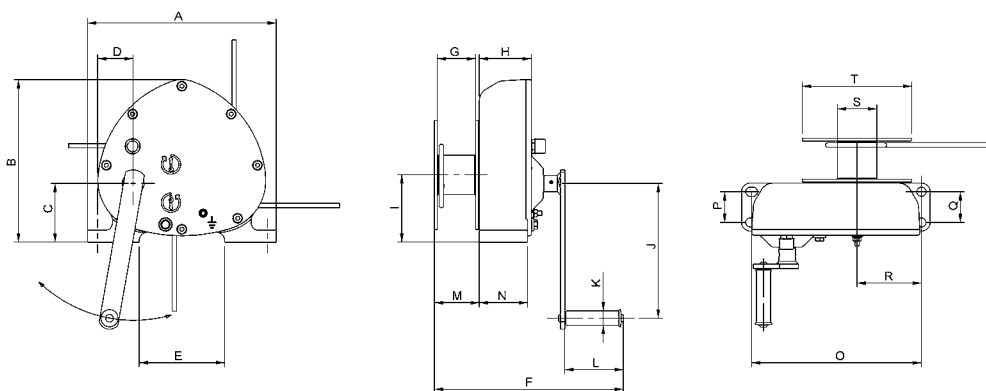
Technical data model OMEGA-EX

Art.-No.	Model	Pulling force 1 st layer daN	Pulling force top rope layer daN	Crank effort 1 st layer daN	Rope advance per one crank rotation mm	Weight without rope kg	Recommended rope diameter* mm
040022319	OMEGA-EX 6	630	305	10	21	22	7
040029019	OMEGA-EX 10	1000	500	16	22	22	8

*According to DIN 3060 FE-znk 1770sZ-spa

Dimensions model OMEGA-EX

Model	OMEGA-EX 6	OMEGA-EX 10
A, mm	345	345
B, mm	297	297
C, mm	107	107
D, mm	65	65
E, mm	156	156
F, mm	345	345
G, mm	70	70
H, mm	95	95
I, mm	123	123
J, mm	250	250
Ø K mm	26	26
L, mm	107	107
M, mm	82	82
N, mm	88	88
O, mm	310.5	310.5
P, mm	56	56
Q, mm	56	56
R, mm	117.6	117.6
Ø S, mm	72	72
T, mm	200	200





Rack and pinion jack model ZWW-EX

Lifting capacity 250 kg

The rack and pinion jack is suitable for lifting, lowering, pulling and pushing, for horizontal displacement, supporting, adjusting or fixing of heavy components or whole appliances and equipment in hazardous areas.

Features

- Carefully selected materials and a high-grade coating prevent the occurrence of mechanically caused sparks.
- No inadmissible heating of the surfaces due to the intelligent design of the individual parts.
- Equipotential bonding and limited surface area to avoid electrostatic charging.
- The grease-lubricated, self-locking worm gear is set into operation by rotations on the crank. It provides not only for easy movement of the load, but also for a reliable safety in every position.

Application area

Plant construction, shipping, wastewater treatment plants, chemical industry and food industry.

Option

- In stainless steel design.
- With metallic or ceramic coating.

Technical data model ZWW-EX

Art.-No.	Model	Capacity kg	Rack length mm	Lift mm	Weight kg
040024366	ZWW-EX	250	740	550	9

Protection classification
Ex II 2 GD c IIB T3 195°C

